

Monday, May 11, 2026
 6:00-7:30 PM Board Meeting
Virtual



To join Zoom Video Conference:
<https://us02web.zoom.us/j/84468250202?pwd=Rk5sRERSZXl6WVV0UmJIWEFBcDIHUT09>
 Phone: 1-669-900-6833
 Meeting ID: 844 6825 0202
 Passcode: 640956

BENTON SWCD BOARD OF DIRECTORS MAY MEETING AGENDA

| Goal | Item | Lead | Time | ACTION |
|-------------|---|------------------------------|-------------|---------------|
| | Call to Order, Introductions, Public Comments, Announcements, Additions to Agenda | <i>Johnson</i> | 6:00 | |
| | CONSENT AGENDA | <i>Johnson</i> | 6:04 | ACTION |
| 5 | Approve draft Minutes from April 13 Board Meeting | | | |
| 5 | Accept Financials (3/31/26) | | | |
| | REGULAR AGENDA | | | |
| 1 | NRCS staff report; recap of Local Work Group Meeting | <i>Rice</i> | 6:05 | |
| 1 | Summarize the Middle Muddy Oliver Creek Strategic Implementation Area Open House | <i>Remsey / Ahr</i> | 6:15 | |
| 2 | Summarize the Nature Neighbors Open House | <i>Roberts / Ahr</i> | 6:25 | |
| 5 | Recap of Budget Committee Meeting and budget timeline– Information Only | <i>Ahr</i> | 6:35 | |
| 1-5 | Questions from Board on BSWCD and NRCS activities 10 minutes | <i>Directors/ Staff/NRCS</i> | 6:45 | |
| 1-5 | Meeting Adjourned | <i>Johnson</i> | 7:00 | |

| Strategic Direction Goals 2023-2027 |
|--|
| Goal #1: Ensure that the soil, water, and ecosystems of Benton County, including diverse habitats on wild, working, and urban lands, are protected, restored, and resilient. |
| Goal #2: Deliver engaging education and outreach opportunities that inspire residents throughout Benton County to protect and restore soil, water, and habitat. |
| Goal #3: Develop clear, consistent communications so people throughout Benton County can easily participate in Benton SWCD services and take action to steward our resources. |
| Goal #4: Enhance our strategic partnerships and revenue to increase Benton SWCD's impact. |
| Goal #5: Implement operations that support highly effective programs and services. |

| BSWCD Board and Outreach Events (subject to change) | | |
|--|---|--|
| Date/Time | Event | Location |
| May 9, 10:30 am-12 pm | Weed Watchers Workshop | 4077 SW Research Way Corvallis, OR 97333 |
| May 11, 6:00-7:30pm | 2 nd Budget Committee Meeting (if needed) | 804a NW Buchanan Ave. Corvallis, OR 97330 |
| May 16, 9am-12pm | Let's Pull Together | Several sites across the county |
| June 8, 6:00-7:30pm | Regular Board Meeting & Budget Hearing Meeting | TBD/Zoom |
| | | |
| | | |
| | | |

Check our website calendar regularly for additional items that are still being finalized:
 bentonswcd.org/calendar

Michael Ahr

Executive Director - Staff Report for **April 2026**



April 27 through May 1 was probably the most fulfilling weeks I've had at the District. During this week, we finished our draft budget and budget message and sent it to the Budget Committee; We submitted two funding proposals (\$60K for aquatic invasive species and \$90K for oak engagement); we held the Strategic Implementation Area Open House (Brad did awesome!); Nature Neighbors Open House (Sara did awesome!); and knocked out the Local Work Group meeting on Thursday. This work was made better because of involvement from partners on the grant proposals and Open Houses. We're all really busy connecting with partners and community and I thoroughly enjoy it!! Plus it was payday this week!!

Oak Habitat – Our oak engagement grant application was a pre-proposal for the Oak Focused Investment Partnership. I had 2 meetings related to the overall FIP effort and a couple to prep the proposal. Great team work from Tatum and Sara to get this proposal put together.

Middle Muddy & Oliver Creek Strategic Implementation Area – Brad and I can talk a minute about this at the Board meeting and let you know the next steps now that Open House is done

PFC Meeting – Our Personnel and Finance Committee meeting was great on April 20. I always enjoy these meetings. They feel like a work session where we can really dig into some ideas and weigh budget implications. Thanks to the committee for being thoughtful and engaged.

Partnerships –

- Sara and I continue to work with Greenbelt Land Trust (GLT) to launch Nature Neighbors. It's now launched! April was a busy time getting ready. Great work by Sara on this.
- Coordinated a tour with several partners at Luckiamute Landing (part of Willamette Mainstem Cooperative)
- Joe Stack at Oregon Department of Fish and Wildlife had a few of us out on a tour with the ODFW Habitat Division where we looked at Tye Wetlands, Herbert Farm, and a private oak property on the northern fringe of Corvallis. We were able to talk about our work in front of a really great group. Note that Joe has been at a few important partner meetings this month and really does a great job representing ODFW programs and the partnership we hold with the agency.

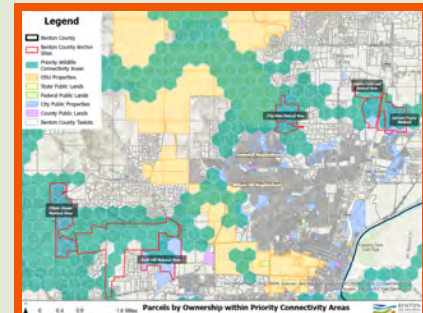
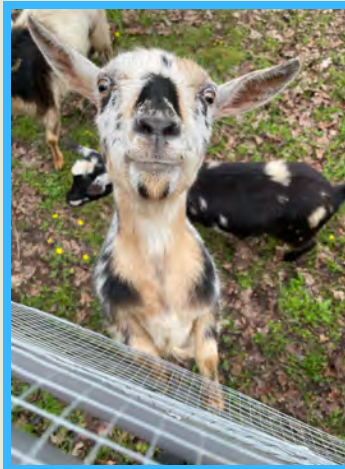
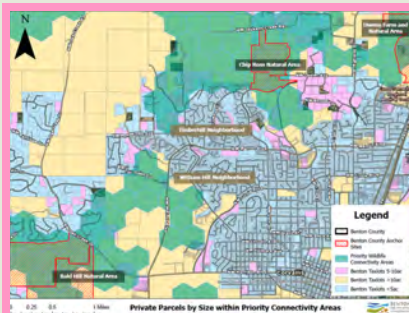
Other Notes

- Several hours were definitely spent crafting the budget and talking to staff about their needs. Jenny Brausch (bookkeeper) helped quite a bit.
- Work Plans – Staff are working on an individual work plan, and several of them have turned a draft in to me. We'll tune these up and then integrate them into a District Work Plan that will be submitted to you all for review at our June Board Meeting.

April 2026

Staff Report by Tatum VanHawkins

- Watenpaugh Farm Restoration 2 year report - Submitted!
- Willamette Mainstem Cooperative Meeting at The Luckiamute Confluence property
- 9 Oak Habitat Site Visits
- 2 - in person NRCS Trainings
 - NRCS Tangent Office
 - Private Farm in Cottage Grove
- Finished up the Coen Forest Inventory
 - Got to meet 23 Baby Goats!!
 - Shout out to Cierra for collecting forestry data on trees covered in Poison Oak
- Met with David Eckert and MRWC about the Mill Race and potential future projects
- Finished up mapping for preapplication on the Focused Investment Partnership (FIP) opportunity.
- ODFW Habitat Division Site Tour - Tye Winery and Herbert Farm
- Attended the Nature Neighbors Public Meeting at the Library
 - Sara and Michael CRUSHED IT!
- Presented at the Local Working Group Meeting hosted by NRCS





April 2026 Report

Brad Remsey
Resource Conservationist

April proved to be busy and insightful. With the days growing longer and spring in full stride the team is hard at work to carry that same momentum as we launch our new programs.

Went to the CONNECT+ conference in Seaside. I enjoyed being able to gain insights to the successes and struggles of district operations and seeing the variety of projects being worked on across the state.

Attended 3 tours of restoration projects.

- The first was a Greenbelt Land Trust property tour at the confluence of the Luckiamute and Willamette river. They completed a massive replanting of a eighty-some acres and discussed management and future plans.
- I also visited participated in a tour of three Yamhill SWCD properties that they own and manage. They discussed the acquisition of the properties, on the ground efforts of each one and the challenges of owning, managing and leasing the different properties.
- Lastly, ODFW held a meeting with national and regional partners to discuss how to maintain momentum. The meeting included a tour of three properties that where large restoration efforts took place. The three projects sites included efforts from the partners in attendance.

Cierra, Tatum and I attended NRCS trainings for Resource Concern List and Planning Criteria and also an In-Field Assessment for pasture where we practiced field evaluations for a new property owner the NRCS is currently working with in Cottage Grove.

We hosted an open house for the Middle Muddy and Oliver Creek Strategic Implementation Area. We had about 20 land-owners in attendance. Partners such as OSU Extension, ODFW, and Marys River Watershed Council spoke and held

Completed a successful Water Quality day in the Upper Muddy Creek SIA.

Met with Ross Mitchell to begin writing a grant to help create more paddocks for grazing in his oak release project and protect an 18 acre upland prairie restoration effort currently in its infancy.



Camas field my group assessed as part of our NRCS pasture assessment.



ODFW tour of Herbert farm where IAE has made efforts to reestablish an open prairie planting.



Olivia Jasper of ODA introducing the SIA and sharing the goals of our SIA program



ACCOMPLISHMENTS:

Lots of Nature Neighbors stuff!

- Meeting with Benton County staff on 4/6
- Donors' meeting at Bald Hill Farmhouse on 4/13
- Partners' meeting on 4/15
- Public meeting on 4/29 - we had about 85 people register and about 65 people attend
- Benton County's public information officer wrote an article about the program that was also picked up the Corvallis Advocate, KEZI, and Philomath News. [Read it here](#)

Jerry Paul Native Pollinator Conservation (JPNPC) grant:

I've been doing my final site visits of last year's grantees, and the projects are all looking great. We'll open the application for the next round in May.

FIP grant: I've been meeting with Michael, Tatum, and folks from the Willamette Valley Oak and Prairie group to work on a pre-proposal for a Focused Investment Partnership (FIP) grant. We've incorporated Nature Neighbors into the proposal which is pretty cool.

Connect Conference: attended some great presentations and made some great connections with other conservation districts, watershed councils, and agency folks.

IN PROGRESS:

- Preparing to open Nature Neighbors up for (limited) enrollment on May 4th!
- Getting ready to open up JPNPC applications in mid-May
- Helping Cierra with marketing for upcoming weed workshop and weed pulls
- Continued meetings with Contamination Committee
- Prepping for a couple of outreach events in May: "Beavers and Blooms" with Greenbelt Land Trust, and a field trip at J2E Tree Farm
- Finalizing plans for Natural Resources Day for Leadership Corvallis (May 14)



Mason bee box at Corvallis Waldorf School



JPNPC sign on a grantee's fence in Philomath



Nature Neighbors public information meeting

April was an exciting month with lots of field time for me. It started off with the Connect+ conference in Seaside which was great. I made a couple of new connections and heard great presentations ranging from how Districts are adapting their projects for Emerald Ash Borer invasion to updates from OWEB about optimizing their online grant tracking system.



Connect+ 2026 keynote presentation opening slide



Connect+ 2026 field tour to Lewis and Clark National Historical Park



From there, the invasive species work began. I spent a handful of days this month in the field with the Integrated Resource Management crew as well as Grant Jackson (our regional ODA specialist) applying herbicide on various oblong spurge and garlic mustard sites.



Looking ahead to May:

- 1. Spring Weed Watchers Workshop with OSU Extension
- 2. Benton CWMA Let's Pull Together 2026
- 3. Continuing the oblong spurge & garlic mustard field season








Staff Report April 2026 - Operations Coordinator

Employee Name: Candace Mackey

Reports to: Executive Director-Michael Ahr

Narrative: *Everything's Coming Up Budget* 🎵

1. Goal #5: Implement operations that support highly effective programs and services. Strategy #5
Ensure District operations meet the highest standards of public agency administration

| | | |
|---|---|---|
| <p>Budget</p> |  | <p>Aid executive director in creating FY27 budget numbers. Notice and execution of Personnel & Finance Committee Meeting. Notice Budget Committee Meeting. Update Budget Committee contact information, compile, and send out the meeting packet. Set up logistics for Budget Committee Meeting.</p> |
| <p>Financial</p> |  | <p>Usual monthly Accounts Payable, Deposit, and Bookkeeping Support. After consulting with computer support, designed and created new fill in Credit Card Reporting form for staff.</p> |
| <p>HR</p> |  | <p>Attended Special District Association of Oregon's Annual Regional Health Benefits Meeting to find out staff FY27 benefits, and any changes that will affect them with providers.</p> |
| <p>Training</p> |  | <p>Attended Spring Cybersecurity Summit & Tabletop Exercise to begin first draft of BSWCD's Cyber Incident Response Plan.</p> |
| <p>Facilities</p> |  | <p>Nothing of note this month. We love our office and the ability to have free conference rooms VERY CLOSE!</p> |
| <p>Organizational Support/Document Retention</p> |  | <p>Completed first draft of Operations Coordinator 2026-2027 Workplan. Sorting Physical/Digital Project files for document retention rules to also put some in storage and move others out in case of another move. This has been very time intensive, but very educational on how we might organize file names and document retention schedules in the future.</p> |
| <p>Compliance</p> |  | <p>Quarterly taxes mailed. SDAO Best Practices Survey completed. All public meetings properly noticed. All required reports uploaded for ODA. Annual Workplan Draft completed.</p> |



Natural Resources Conservation Service

District Conservationist Monthly Report – Benton & Linn Counties March 2026

Summary of Staff for Benton/Linn Counties:

- Stephanie Rice- District Conservationist
- Amy Kaiser- Soil Conservationist
- Cory Oltjen- Natural Resource Specialist
- Adam Phelps- Partner Biologist with ODFW
- Charlotte Hamilton- Partner with American Farmland Trust

Programs:

- The 2026 application deadline was January 15th
- We will know who was selected for EQIP funding by mid-June
- There is a new Regenerative Pilot Program (RPP) which focuses on soil health
- CSP for 2026 has undergone some large changes
- We are working through certifications and payments for all existing contracts.
- Currently we are going on "inventory and evaluation" site visits to collect information for ranking our collected applications for both EQIP and CSP

Local Working Group Meetings:

- Benton - [4/30/2026 from 3pm-4pm in Corvallis](#)
- Linn - Occurred on 4/20/2026

Program Information:

- What's available in **Benton** County?
<https://www.nrcs.usda.gov/conservation-basics/conservation-by-state/oregon/benton-county>
- What's available in **Linn** County?
<https://www.nrcs.usda.gov/conservation-basics/conservation-by-state/oregon/linn-county>

USDA – NATURAL RESOURCES CONSERVATION SERVICE
Stephanie Rice | District Conservationist | 541-620-3976|

stephanie.rice@usda.gov

Tangent Service Center 31978 North Lake Creek Drive,
Tangent OR 97389 USDA is an equal opportunity provider,
employer, and lender.



FY2026-2027 BUDGET CALENDAR

Budget Year: July 1, 2026 - June 30, 2027

- Proposed Budget Prepared.....April 24, 2026
- Publish first notice of Budget Committee Meeting.....April 20, 2026
(Submit by April 13 to Gazette Times – notice must appear 5 to 30 days before the meeting)
- Publish second notice of **Budget Committee Meeting**.....April 21, 2026
(post prominently on website for at least the 10 days before the meeting)
- Budget Committee Meeting.....May 4, 2026
6:00-7:30 pm in-person and Virtual Meeting (Zoom Video Conference or Call-In)
Approve Budget and Set Tax Rate or reconvene as agreed to by committee
- Publish notice of 2nd **Budget Committee Meeting (if needed)**..... per public meeting law
- Second Budget Committee Meeting (if needed)May 11, 2026
- Publish Budget Hearing Notice..... **May 25, 2026**
(Submit by May 19 – notice must appear not less than 5 days before or more than 30 days before the hearing)
- Hold Budget Hearing**.....June 08, 2026
- Enact Resolutions.....June 08, 2026
*Includes: Adopt budget, make appropriations,
Declare the tax levy by fund, and categorize the levy*
- Certify Tax to Assessor.....by July 15, 2026
- Budget (LB forms) to Benton County Clerk.....by September 30, 2026

NOTE: This budget calendar is based on Oregon Local Budget Requirements. Oregon law requires two notices for the budget committee meeting: only one in the newspaper if the notice is also posted on the website (ORS 294 421). The paper of record for Benton Soil and Water Conservation District is The Corvallis Gazette-Times.

Monday, April 13, 2026
6:00-7:30 PM Board Meeting



To join Zoom Video Conference:

<https://us02web.zoom.us/j/84468250202?pwd=Rk5sRERSZXI6WVV0UmJIWEFBcDIHUT09>

Phone: 1-669-900-6833

Meeting ID: 844 6825 0202

Passcode: 640956

BOARD OF DIRECTORS MEETING MINUTES

In Attendance

Board Members Present: Greg Jones, Marcella Henkels, Kerry Hastings, Aubrey Siddiqui-Cloud, David Barron, Nate Johnson, Eliza Mason, Henry Storch-Director Emeritus

Associate Directors Present: Charlene Carroll, Michael Rhoades, Rana Foster, Claire Phillips, Nico Conoan-Nieves

Staff Present: Michael Ahr, Sara Roberts, Brad Ramsey, Tatum VanHawkins, Candace Mackey (minutes)

Staff Absent: Cierra Dawson

Others Present: Stephanie Rice, USDA/NRCS, Rolando Beorchia CER, Sunrise Restoration (Guest) Darian Lightfoot, Long Tom Watershed Council (Guest), Molly Tephra (Guest)

Call to Order - Johnson (6:03 pm)

Introductions, Public Comments, Announcements, Additions/Changes to Agenda

Introductions: All introduce themselves.

Public Comments: None.

Announcements: None.

Additions/Changes to the Agenda: None.

CONSENT AGENDA

- **Approve draft Minutes of March 9, 2026, Board Meeting**
- **Accept Financials (02/28/26)**

Discussion: Question from Director Hastings regarding why Holly Crosson's credit card, even with a consistent \$0.00 balance, shows up in the financial reports. Was the card ever closed? Michael Ahr explains, indeed, the card was paid off and closed, and he will ask that the account be made inactive, so it won't keep showing up.

MOTION: Nate Johnson moves to approve the consent agenda. Second: Kerry Hastings
Result 7-0: Nate Johnson-Yes Greg Jones-Yes Marcella Henkels-Yes, Kerry Hastings-Yes David Barron-Yes Aubrey Siddiqui-Cloud-Yes Eliza Mason-Yes

REGULAR AGENDA

- **NRCS Report:** Not many updates from the report in the board packet. Last application deadline was January 31, ranking now, deadline is at the end of April, but the end of May should know who will be funded. Lots of changes to ranking process which is exciting.

All documents referenced in these minutes are a part of the official record and can be distributed upon request.

Funding has been confirmed for next year as well. Finishing up current contracts. NRCS Working Group meeting has been set where landowners can find out the current NRCS priorities and give input on the 30th of April at 3pm at the Corvallis Library.

- **Update from Long Tom Watershed Council (LTWC) and Traditional Ecological Inquiry Program (TEIP)**

Michael Ahr explains that BSWCD gives support to the LTWC for work in the TEIP program, and we ask them to give them an update on the work. Darin Lightfoot shows photos of work from the past year and discusses the program. They've been able to hire a program director after some years with contract program staff. The budding program has now become very robust, creating a communication plan, outreach materials, and strategy moving forward. Interns learn how to stay in touch with the land while learning traditional practices. Most of the work this year has been done on the Chaa-lamali land. They have been working on Indigenous Fire Practitioner Training with safety staff, elders, federal partners, interns and other staff. Another TEIP program event is the yearly Camas bake, with interns, families, and elders in a first foods approach (Team TEK), camping overnight and working together. Another important project this year by the TEIP program was with wildlife reintroduction. Lamprey were released by coordinating with Siletz-Grand Ronde to move them above the Fern Ridge Dam. Restoration of the species as well as cultural significance of the lamprey were taught during the move. CFEX Cultural Fire Exchange took interns with other agencies to gain knowledge in cultural burning.

The best way to stay in touch with what they're doing is to sign up for their newsletter. Darian explains there is another opportunity where TEIP is participating in work with other agencies with a presentation May 1, at 6pm at Monroe Public Library.

- **New Program! Nature Neighbors is launching!**

Sara Roberts shows slides laying out the new program. This was to fill a need for smaller, backyard habitat support as was brought up in the past by the BSWCD board. This program was developed with Greenbelt Land Trust and will be launched on May 4th. Purpose: We need all different sizes and levels of habitat to create continuity with wild and working lands. These projects can create habitat corridors for wildlife as well as begin to restore our native habitats, that support the pollinators needed by our agriculture. She lays out the basic requirements for participation in the program, the details of it, and lets the audience know that this first year will be treated as a pilot year to determine BSWCD's capacity for running it, landowner needs, and to receive feedback from the community. Open house will be on April 29th.

- **Budget Committee Applicants**

Discussion: Michael Ahr explains that Inge King would like to continue in her role on the budget committee for another term, which he would highly recommend, and that the two other candidates are present tonight. Their applications were in the packet for the board to review. He recommends nominating and accepting all three candidates on to the budget committee.

MOTION: Nate Johnson moves to approve appointing Inge King, Rolando Beorchia and Molly Tephra to the Budget Committee. Second: Greg Jones

Result 7-0: Nate Johnson-Yes Greg Jones-Yes Marcella Henkels-Yes, Kerry Hastings-Yes David Barron-Yes Aubrey Siddiqui-Cloud-Yes Eliza Mason-Yes

- **Middle Muddy & Oliver Creek SIA Open House**

Open House for our new Strategic Implementation Area slated for April 29th at 3pm at the Monroe Public Library. ODA AND BSWCD will introduce the new project focused on agricultural water quality in the Middle Muddy and Oliver Creek watersheds. We'll introduce the BSWCD conservationists and ODA staff, as well as OSU Extension staff involved, Mary's River Watershed Council and hopefully ODFW. Focus of this Strategic Implementation Area is water quality monitoring, manure management, and push for riparian buffers along these waterways as established by concerns of ODA. They will also explain the grant programs that support this work and assist farmers in conservation efforts.

- **Upcoming Budget and Board Related Meetings**

Michael Ahr goes through all upcoming important meetings. It is important to note that if there is a second budget committee meeting, this will push/be on the same date as the May board meeting and will need to be accommodated.

- **Questions from Board on BSWCD and NRCS Activities.**

Nate Johnson wants to ask about the check register. Amounts are showing up as negative balance. Needs to be shown as a correction in the consent agenda in the minutes for this month. Kerry Hastings also asks why the Direct Deposit for payroll shows up \$.00 for each employee. Michael explains this is for privacy purposes, but the payroll lump sum is shown for the monthly payroll.

Meeting Adjourned - Johnson (7:23pm)

Financial Report

Period ending 31 March 2026
Benton SWCD Board Meeting
11 May 2026

Our Oregon LGIP account closing balance was \$972,021.05. The dividend paid was \$3,372.80 and the monthly distribution yield was 4.00%. The fiscal year-to-date dividend paid was \$29,266.06.

The Benton County Finance Department paid the District \$9,609.42 for the month. The year-to-date amount is \$536,056.45.

The total balance of both Citizen Bank accounts combined was \$109,346.03. The previous month's combined balance was \$81,630.76. Both accounts were reconciled and all checks were accounted for.

The balance of the credit card account ending 2979 as of 29 March 2026 was \$1,491.35. The balance of the credit card account ending 0072 as of 27 March 2026 was \$662.43. All charges were reconciled.

The Stripe account was reconciled. The starting balance was \$0. The ending balance was \$0.

Respectfully submitted,



nico conoan nieves
Treasurer

Benton Soil & Water Conservation District
Balance Sheet
 As of March 31, 2026

| | Mar 31, 26 | Mar 31, 25 | \$ Change |
|--|---------------------|---------------------|-------------------|
| ASSETS | | | |
| Current Assets | | | |
| Checking/Savings | | | |
| 10100 · Citizens Bank - 39 | 93,537.72 | 82,369.73 | 11,167.99 |
| 10150 · Citizens Bank - 84 | 8,412.21 | 11,779.94 | -3,367.73 |
| 10200 · LGIP | 973,816.91 | 979,771.92 | -5,955.01 |
| 10800 · Petty Cash | 24.00 | 24.00 | 0.00 |
| Total Checking/Savings | 1,075,790.84 | 1,073,945.59 | 1,845.25 |
| Accounts Receivable | | | |
| 11000 · Accounts Receivable | 3,799.50 | 0.00 | 3,799.50 |
| 11400 · Grants Receivable | 17,151.36 | 38,970.19 | -21,818.83 |
| Total Accounts Receivable | 20,950.86 | 38,970.19 | -18,019.33 |
| Other Current Assets | | | |
| 12010 · 100-1505 Due to/Due frm BR Fund | -118,200.00 | -118,200.00 | 0.00 |
| 12015 · 100-1500 Due to/from Proj Fund | -6,841.93 | -21,012.93 | 14,171.00 |
| 12020 · 200-1080 Cash Due to/frm Gen Fnd | 6,841.93 | 21,012.93 | -14,171.00 |
| 12040 · 400-1080 Cash Due to/Due frm GF | 118,200.00 | 118,200.00 | 0.00 |
| 13000 · Prepaid expenses-Audit | 10,122.99 | 6,264.76 | 3,858.23 |
| Total Other Current Assets | 10,122.99 | 6,264.76 | 3,858.23 |
| Total Current Assets | 1,106,864.69 | 1,119,180.54 | -12,315.85 |
| Other Assets | | | |
| 18400 · Property Tax Receivable-Audit | 11,826.00 | 10,809.00 | 1,017.00 |
| Total Other Assets | 11,826.00 | 10,809.00 | 1,017.00 |
| TOTAL ASSETS | 1,118,690.69 | 1,129,989.54 | -11,298.85 |
| LIABILITIES & EQUITY | | | |
| Liabilities | | | |
| Current Liabilities | | | |
| Accounts Payable | | | |
| 20000 · General Accounts Payable | 1,586.32 | 11,589.41 | -10,003.09 |
| 20100 · Project Accts Payable | 439.00 | 981.50 | -542.50 |
| Total Accounts Payable | 2,025.32 | 12,570.91 | -10,545.59 |
| Credit Cards | | | |
| 22000 · CITIZENS BANK MASTER CARD | | | |
| 22003 · Holly CC - 2995 | 0.00 | -136.39 | 136.39 |
| 22015 · Michael CC - 7218 | 0.00 | -270.62 | 270.62 |
| 22016 · Sara CC - 0962 | 300.10 | 618.10 | -318.00 |
| 22017 · Candace CC - 2905 | 491.25 | 901.69 | -410.44 |
| 22018 · Cierra CC - 2963 | 350.00 | 560.50 | -210.50 |
| 22019 · Brad CC - 5630 | 350.00 | 0.00 | 350.00 |
| Total 22000 · CITIZENS BANK MASTER CARD | 1,491.35 | 1,673.28 | -181.93 |
| 22100 · MASTERCARD - 0072 | | | |
| 22103 · Candace CC - 9943 | 98.80 | 0.00 | 98.80 |

Benton Soil & Water Conservation District
Balance Sheet
 As of March 31, 2026

| | Mar 31, 26 | Mar 31, 25 | \$ Change |
|--|---------------------|---------------------|-------------------|
| 22104 · Cierra CC - 5566 | 619.00 | 0.00 | 619.00 |
| 22105 · Brad CC - 5309 | 2.98 | 0.00 | 2.98 |
| Total 22100 · MASTERCARD - 0072 | 720.78 | 0.00 | 720.78 |
| Total Credit Cards | 2,212.13 | 1,673.28 | 538.85 |
| Other Current Liabilities | | | |
| 24000 · PAYROLL LIABILITIES | | | |
| 24010 · 941 Account | 7,142.32 | 7,297.90 | -155.58 |
| 24020 · Oregon Withholding | 2,003.00 | 1,896.00 | 107.00 |
| 24030 · OR-WBF SUTA | 1,739.46 | 2,041.05 | -301.59 |
| Total 24000 · PAYROLL LIABILITIES | 10,884.78 | 11,234.95 | -350.17 |
| 25800 · Deferred Revenue Grants-Audit | 6,670.22 | 11.45 | 6,658.77 |
| Total Other Current Liabilities | 17,555.00 | 11,246.40 | 6,308.60 |
| Total Current Liabilities | 21,792.45 | 25,490.59 | -3,698.14 |
| Long Term Liabilities | | | |
| 27050 · Deferred Revenue Taxes -Audit | 10,351.09 | 9,156.09 | 1,195.00 |
| Total Long Term Liabilities | 10,351.09 | 9,156.09 | 1,195.00 |
| Total Liabilities | 32,143.54 | 34,646.68 | -2,503.14 |
| Equity | | | |
| 31100 · Building Reserve Fund Balance | 118,200.00 | 118,200.00 | 0.00 |
| 31200 · Project Fund Balance | 10,207.00 | 10,207.00 | 0.00 |
| 32000 · General Fund Balance | 844,700.82 | 855,778.23 | -11,077.41 |
| Net Income | 113,439.33 | 111,157.63 | 2,281.70 |
| Total Equity | 1,086,547.15 | 1,095,342.86 | -8,795.71 |
| TOTAL LIABILITIES & EQUITY | 1,118,690.69 | 1,129,989.54 | -11,298.85 |

2:49 PM

04/28/26

Accrual Basis

Benton Soil & Water Conservation District
Citizens Bank Check Register
 As of March 31, 2026

| Type | Date | Num | Name | Memo | Debit | Credit | Balance |
|-----------------------------------|------------|-------|-----------------------------------|-----------------------------|------------|----------|------------|
| 10100 · Citizens Bank - 39 | | | | | | | 68,718.36 |
| Bill Pmt -Check | 03/02/2026 | 10541 | New Morning Bakery | Invoice: BSW022826 () | | 447.00 | 68,271.36 |
| Liability Check | 03/04/2026 | DBT | HRA VEBA Plan | YA20521 | | 1,201.20 | 67,070.16 |
| Liability Check | 03/04/2026 | DBT | United States Treasury | 93-1077051 | | 7,911.64 | 59,158.52 |
| Liability Check | 03/04/2026 | DBT | Oregon Dept of Revenue | 0292193-0 | | 2,175.00 | 56,983.52 |
| Bill Pmt -Check | 03/05/2026 | 8491 | Benton County Assessor | CIR# 26-040 | | 11.25 | 56,972.27 |
| Deposit | 03/06/2026 | | | NPS cash sales Deposit | 112.50 | | 57,084.77 |
| Transfer | 03/09/2026 | | | Funds Transfer | 100,000.00 | | 157,084.77 |
| Bill Pmt -Check | 03/09/2026 | 10542 | BACO, LLC | Invoice: 030126- () Invo... | | 8,571.75 | 148,513.02 |
| Bill Pmt -Check | 03/09/2026 | 10543 | Column Software PBC | Invoice: E7DC4425-000... | | 362.82 | 148,150.20 |
| Bill Pmt -Check | 03/09/2026 | 10544 | Advantage Computing & Elec... | Invoice: 410 (Check Stu... | | 521.83 | 147,628.37 |
| Bill Pmt -Check | 03/09/2026 | 10545 | Staff- Michael Ahr | Invoice: 260302-G MA () | | 116.01 | 147,512.36 |
| Bill Pmt -Check | 03/09/2026 | 10546 | Staff- Candace Mackey | Invoice: 03042026-G C... | | 29.75 | 147,482.61 |
| Check | 03/10/2026 | DBT | Card Service Center - Master... | | | 2,550.98 | 144,931.63 |
| Bill Pmt -Check | 03/10/2026 | 10547 | Champogeg Nursery | Invoice: 7530 (Check St... | | 6,385.72 | 138,545.91 |
| Bill Pmt -Check | 03/10/2026 | 10548 | Sevenoaks Native Nursery L... | Invoice: 14390 (Check S... | | 4,492.80 | 134,053.11 |
| Bill Pmt -Check | 03/10/2026 | 10549 | Willamette Gardens | Invoice: 260305-G CD (... | | 1,137.50 | 132,915.61 |
| Bill Pmt -Check | 03/10/2026 | 10550 | Eurofins Drinking Water and ... | Invoice: 1770002306 (C... | | 342.00 | 132,573.61 |
| Bill Pmt -Check | 03/16/2026 | 10551 | CTX-Xerox | Invoice: IN5278739 (Ch... | | 37.28 | 132,536.33 |
| Bill Pmt -Check | 03/16/2026 | 10552 | AvidXchange, Inc. | Invoice: CINV-60222 () | | 395.00 | 132,141.33 |
| Bill Pmt -Check | 03/16/2026 | 10553 | Staff- Sierra Dawson | Invoice: 260306-G CD () | | 110.20 | 132,031.13 |
| Bill Pmt -Check | 03/16/2026 | 10555 | 1Bill - Xerox Financial Services | Invoice: 41728231 () | | 156.17 | 131,874.96 |
| Bill Pmt -Check | 03/16/2026 | 10556 | Staples | Invoice: 6057333443 () | | 67.69 | 131,807.27 |
| Bill Pmt -Check | 03/16/2026 | 10554 | Institute for Applied Eco. - D... | Invoice: INV001030 (Ch... | | 1,126.80 | 130,680.47 |
| Deposit | 03/18/2026 | | | Deposit | 4,377.00 | | 135,057.47 |
| Bill Pmt -Check | 03/19/2026 | 8492 | Adams School | CIR# 26-043 | | 500.00 | 134,557.47 |
| Bill Pmt -Check | 03/19/2026 | 8493 | Benton County 4-H Association | CIR# 26-050 | | 500.00 | 134,057.47 |
| Bill Pmt -Check | 03/19/2026 | 8494 | Chintimini Wildlife Center | CIR# 26.044 | | 500.00 | 133,557.47 |
| Bill Pmt -Check | 03/19/2026 | 8495 | Corvallis School District Oper... | CIR# 26-046 | | 500.00 | 133,057.47 |
| Bill Pmt -Check | 03/19/2026 | 8496 | J2E Tree Farm LLC | CIR# 26-047 | | 500.00 | 132,557.47 |
| Bill Pmt -Check | 03/19/2026 | 8497 | Kathryn Jones Harrison Elem... | CIR# 26-048 | | 200.00 | 132,357.47 |
| Bill Pmt -Check | 03/19/2026 | 8498 | Long Tom Watershed Council | CIR# 26-042 | | 1,200.00 | 131,157.47 |
| Bill Pmt -Check | 03/19/2026 | 8499 | Luckiamute Watershed Coun... | CIR# 26-041 | | 1,200.00 | 129,957.47 |
| Bill Pmt -Check | 03/19/2026 | 8500 | Philomath School District 17J | CIR# 26-049 | | 500.00 | 129,457.47 |
| Bill Pmt -Check | 03/19/2026 | 8501 | Corvallis Environmental Center | CIR# 26-045 | | 400.00 | 129,057.47 |
| Bill Pmt -Check | 03/23/2026 | 10557 | 1Bill - Crystal Lake Storage | Invoice: 124-17842 () | | 185.00 | 128,872.47 |
| Bill Pmt -Check | 03/23/2026 | 10558 | Staff- Brad Ramsey | Invoice: 260311-G BR () | | 110.20 | 128,762.27 |
| Bill Pmt -Check | 03/23/2026 | 10559 | Abide Web Design | Invoice: 3294 (Check St... | | 5,849.00 | 122,913.27 |
| Bill Pmt -Check | 03/23/2026 | 10560 | Corvallis Fall Festival | Invoice: 272 (Check Stu... | | 2,000.00 | 120,913.27 |

2:49 PM

04/28/26

Accrual Basis

Benton Soil & Water Conservation District
Citizens Bank Check Register
As of March 31, 2026

| Type | Date | Num | Name | Memo | Debit | Credit | Balance |
|----------------------------------|------------|---------|-------------------------------|-----------------------------|-------------------|------------------|------------------|
| Bill Pmt -Check | 03/23/2026 | 10561 | Jenny Brausch Business Sol... | Invoice: 2865 () | | 1,471.93 | 119,441.34 |
| Bill Pmt -Check | 03/23/2026 | 10562 | Staples | Invoice: 6058066473 () | | 30.99 | 119,410.35 |
| Bill Pmt -Check | 03/23/2026 | 10563 | Verizon | Invoice: 6137683513 () | | 204.12 | 119,206.23 |
| Liability Check | 03/26/2026 | 8502 | SDIS | 03-0018433 | | 3,105.00 | 116,101.23 |
| Liability Check | 03/26/2026 | DBT | HRA VEBA Plan | YA20521 | | 1,201.20 | 114,900.03 |
| Liability Check | 03/26/2026 | 8503 | VALIC | Group #67994 | | 2,494.10 | 112,405.93 |
| Deposit | 03/27/2026 | | | Deposit | 6,642.23 | | 119,048.16 |
| Liability Check | 03/30/2026 | | QuickBooks Payroll Service | Created by Payroll Servi... | | 23,725.56 | 95,322.60 |
| Bill Pmt -Check | 03/30/2026 | 10564 | Island Time Catering | Invoice: MEETING0316... | | 1,575.00 | 93,747.60 |
| Bill Pmt -Check | 03/30/2026 | 8504... | Staff- Tatum VanHawkins | | | 170.38 | 93,577.22 |
| Bill Pmt -Check | 03/30/2026 | 8504... | Staff- Tatum VanHawkins | | | 44.23 | 93,532.99 |
| Paycheck | 03/31/2026 | DD | Ahr, Michael S | Direct Deposit | 0.00 | | 93,532.99 |
| Paycheck | 03/31/2026 | DD | VanHawkins, Tatum M | Direct Deposit | 0.00 | | 93,532.99 |
| Paycheck | 03/31/2026 | DD | Dawson, Cierra A | Direct Deposit | 0.00 | | 93,532.99 |
| Paycheck | 03/31/2026 | DD | Mackey, Candace | Direct Deposit | 0.00 | | 93,532.99 |
| Paycheck | 03/31/2026 | DD | Remsey, Brad L | Direct Deposit | 0.00 | | 93,532.99 |
| Paycheck | 03/31/2026 | DD | Roberts, Sara | Direct Deposit | 0.00 | | 93,532.99 |
| Deposit | 03/31/2026 | | | Deposit | 4.73 | | 93,537.72 |
| Total 10100 · Citizens Bank - 39 | | | | | 111,136.46 | 86,317.10 | 93,537.72 |
| TOTAL | | | | | 111,136.46 | 86,317.10 | 93,537.72 |

Benton Soil & Water Conservation District
Profit & Loss by Class
 July 2025 through March 2026

| | General Fund | Project Fund | TOTAL |
|---------------------------------------|-------------------|-------------------|-------------------|
| Ordinary Income/Expense | | | |
| Income | | | |
| 43300 · Grant/Project Administration | 0.00 | 86,169.03 | 86,169.03 |
| 44535 · Taxes Levied | 537,290.06 | 0.00 | 537,290.06 |
| 44540 · ODA Operations | 22,762.50 | 0.00 | 22,762.50 |
| 44545 · ODA Tech, LMA & Scope of Work | 53,109.00 | 0.00 | 53,109.00 |
| 45000 · Interest Income | 29,992.36 | 0.00 | 29,992.36 |
| 46430 · MISCELLANEOUS | 7,222.25 | 0.00 | 7,222.25 |
| 47400 · Native Plant Sale Income | 29,011.94 | 0.00 | 29,011.94 |
| 48000 · TRANSFERS IN | 7,260.10 | 0.00 | 7,260.10 |
| Total Income | 686,648.21 | 86,169.03 | 772,817.24 |
| Gross Profit | 686,648.21 | 86,169.03 | 772,817.24 |
| Expense | | | |
| 60000 · MATERIALS & SERVICES | 173,768.07 | 0.00 | 173,768.07 |
| 66000 · PAYROLL EXPENSES | 387,814.61 | 26,858.45 | 414,673.06 |
| 68000 · PROJECT-MATERIALS & SERVICES | 0.00 | 63,676.68 | 63,676.68 |
| 69400 · TRANSFERS OUT | 0.00 | 7,260.10 | 7,260.10 |
| Total Expense | 561,582.68 | 97,795.23 | 659,377.91 |
| Net Ordinary Income | 125,065.53 | -11,626.20 | 113,439.33 |
| Net Income | 125,065.53 | -11,626.20 | 113,439.33 |

Benton Soil & Water Conservation District
Profit & Loss by Class
 July 2025 through March 2026

| | General Fund | Project Fund | TOTAL |
|--|-------------------------|-------------------------|-------------------|
| Ordinary Income/Expense | | | |
| Income | | | |
| 43300 · Grant/Project Administration | 0.00 | 86,169.03 | 86,169.03 |
| 44535 · Taxes Levied | 537,290.06 | 0.00 | 537,290.06 |
| 44540 · ODA Operations | 22,762.50 | 0.00 | 22,762.50 |
| 44545 · ODA Tech, LMA & Scope of Work | 53,109.00 | 0.00 | 53,109.00 |
| 45000 · Interest Income | 29,992.36 | 0.00 | 29,992.36 |
| 46430 · MISCELLANEOUS | | | |
| 46432 · Contributions | 3,350.75 | 0.00 | 3,350.75 |
| 46440 · Refunds and Reimbursements | 3,871.50 | 0.00 | 3,871.50 |
| Total 46430 · MISCELLANEOUS | 7,222.25 | 0.00 | 7,222.25 |
| 47400 · Native Plant Sale Income | 29,011.94 | 0.00 | 29,011.94 |
| 48000 · TRANSFERS IN | | | |
| 48400 · Transfer Admin from Project Fd | 7,260.10 | 0.00 | 7,260.10 |
| Total 48000 · TRANSFERS IN | 7,260.10 | 0.00 | 7,260.10 |
| Total Income | 686,648.21 | 86,169.03 | 772,817.24 |
| Gross Profit | 686,648.21 | 86,169.03 | 772,817.24 |
| Expense | | | |
| 60000 · MATERIALS & SERVICES | | | |
| 61300 · CONFERENCES AND TRAINING | | | |
| 61310 · Lodging | 879.43 | 0.00 | 879.43 |
| 61330 · Registration | 3,085.88 | 0.00 | 3,085.88 |
| 61340 · Training and Education Material | 1,177.07 | 0.00 | 1,177.07 |
| Total 61300 · CONFERENCES AND TRAINING | 5,142.38 | 0.00 | 5,142.38 |
| 61500 · COMMUNITY CONSERVATION PROGRAMS | | | |
| 61510 · Conservation Education (Youth) | 14,144.30 | 0.00 | 14,144.30 |
| 61520 · Conservation Incentive Program | 12,000.00 | 0.00 | 12,000.00 |
| 61530 · Invasives Program | 1,500.00 | 0.00 | 1,500.00 |
| 61540 · Native Plant Sale | 19,295.64 | 0.00 | 19,295.64 |
| 61570 · Soil Quality Program | 3,495.52 | 0.00 | 3,495.52 |
| 61595 · Jerry Paul Native Poll Con Prog | 5,335.00 | 0.00 | 5,335.00 |
| 61500 · COMMUNITY CONSERVATION PROG | 228.00 | 0.00 | 228.00 |
| Total 61500 · COMMUNITY CONSERVATION PROG | 55,998.46 | 0.00 | 55,998.46 |
| 62100 · CONTRACTED AND PROF SERVICES | | | |
| 62115 · Audit | 7,400.00 | 0.00 | 7,400.00 |
| 62120 · Computer Support | 4,613.74 | 0.00 | 4,613.74 |
| 62130 · PROFESSIONAL SERVICES | | | |
| 62140 · Legal | 1,083.00 | 0.00 | 1,083.00 |
| 62150 · Accounting | 15,031.93 | 0.00 | 15,031.93 |
| 62170 · Web Design, Logo - Marketing | 3,686.25 | 0.00 | 3,686.25 |
| Total 62130 · PROFESSIONAL SERVICES | 19,801.18 | 0.00 | 19,801.18 |

Benton Soil & Water Conservation District
Profit & Loss by Class
 July 2025 through March 2026

| | General Fund | Project Fund | TOTAL |
|---|-----------------|-----------------|------------|
| Total 62100 · CONTRACTED AND PROF SERVICE | 31,814.92 | 0.00 | 31,814.92 |
| 62300 · Dues/Subscriptions/Fees | 12,337.43 | 0.00 | 12,337.43 |
| 62800 · OFFICE OCCUPANCY | | | |
| 62810 · Alarm & Janitorial Services | 1,140.00 | 0.00 | 1,140.00 |
| 62820 · Rent & Parking | 34,487.09 | 0.00 | 34,487.09 |
| 62830 · Utilities | 7,267.43 | 0.00 | 7,267.43 |
| Total 62800 · OFFICE OCCUPANCY | 42,894.52 | 0.00 | 42,894.52 |
| 65000 · SUPPLIES AND MATERIALS | | | |
| 65010 · COPIER AND SUPPLIES | | | |
| 65012 · Copies | 236.76 | 0.00 | 236.76 |
| 65014 · Lease | 1,447.70 | 0.00 | 1,447.70 |
| Total 65010 · COPIER AND SUPPLIES | 1,684.46 | 0.00 | 1,684.46 |
| 65020 · Equipment | 5,017.45 | 0.00 | 5,017.45 |
| 65030 · Office Supplies | 1,757.02 | 0.00 | 1,757.02 |
| 65040 · Postage | 197.58 | 0.00 | 197.58 |
| 65050 · Software/Computer Accessories | 276.16 | 0.00 | 276.16 |
| Total 65000 · SUPPLIES AND MATERIALS | 8,932.67 | 0.00 | 8,932.67 |
| 65110 · PRODUCTION COSTS | | | |
| 65112 · Advertising | 362.82 | 0.00 | 362.82 |
| 65114 · Merchandise | 899.76 | 0.00 | 899.76 |
| 65116 · Newsletters | 450.19 | 0.00 | 450.19 |
| Total 65110 · PRODUCTION COSTS | 1,712.77 | 0.00 | 1,712.77 |
| 65120 · Insurance & Fidelity Bond | 5,396.53 | 0.00 | 5,396.53 |
| 65320 · Mileage/travel related expenses | 3,047.72 | 0.00 | 3,047.72 |
| 65400 · Meetings & Events | 6,490.67 | 0.00 | 6,490.67 |
| Total 60000 · MATERIALS & SERVICES | 173,768.07 | 0.00 | 173,768.07 |
| 66000 · PAYROLL EXPENSES | | | |
| 66200 · Wages | 303,670.69 | 21,926.93 | 325,597.62 |
| 66410 · Health, Dental & Life Insurance | 41,625.02 | 2,189.03 | 43,814.05 |
| 66420 · Retirement | 16,303.43 | 908.20 | 17,211.63 |
| 66500 · Payroll Taxes | 25,515.47 | 1,834.29 | 27,349.76 |
| 66600 · Bonuses | 700.00 | 0.00 | 700.00 |
| Total 66000 · PAYROLL EXPENSES | 387,814.61 | 26,858.45 | 414,673.06 |
| 68000 · PROJECT-MATERIALS & SERVICES | | | |
| 68010 · Project Contracted Services | 0.00 | 33,885.95 | 33,885.95 |
| 68020 · Project Mileage & Travel | 0.00 | 525.28 | 525.28 |
| 68040 · Project Supplies & Materials | 0.00 | 29,265.45 | 29,265.45 |
| Total 68000 · PROJECT-MATERIALS & SERVICES | 0.00 | 63,676.68 | 63,676.68 |
| 69400 · TRANSFERS OUT | | | |
| 69440 · Trf PF to General Fund | 0.00 | 7,260.10 | 7,260.10 |
| Total 69400 · TRANSFERS OUT | 0.00 | 7,260.10 | 7,260.10 |

Benton Soil & Water Conservation District
Profit & Loss by Class
July 2025 through March 2026

| | General Fund | Project Fund | TOTAL |
|----------------------------|-------------------------|-------------------------|-------------------|
| Total Expense | 561,582.68 | 97,795.23 | 659,377.91 |
| Net Ordinary Income | 125,065.53 | -11,626.20 | 113,439.33 |
| Net Income | 125,065.53 | -11,626.20 | 113,439.33 |

Benton Soil & Water Conservation District
Profit & Loss YTD Comparison
 July 2025 through March 2026

| | Jul '25 - Mar 26 | Jul '24 - Mar 25 | Change |
|--|-----------------------------|-----------------------------|-------------------|
| Ordinary Income/Expense | | | |
| Income | | | |
| 43300 · Grant/Project Administration | 86,169.03 | 91,986.66 | -5,817.63 |
| 44535 · Taxes Levied | 537,290.06 | 518,460.06 | 18,830.00 |
| 44540 · ODA Operations | 22,762.50 | 38,515.95 | -15,753.45 |
| 44545 · ODA Tech, LMA & Scope of Work | 53,109.00 | 67,584.55 | -14,475.55 |
| 45000 · Interest Income | 29,992.36 | 34,439.18 | -4,446.82 |
| 46430 · MISCELLANEOUS | | | |
| 46432 · Contributions | 3,350.75 | 3,128.89 | 221.86 |
| 46440 · Refunds and Reimbursements | 3,871.50 | 0.00 | 3,871.50 |
| Total 46430 · MISCELLANEOUS | 7,222.25 | 3,128.89 | 4,093.36 |
| 47400 · Native Plant Sale Income | 29,011.94 | 26,603.25 | 2,408.69 |
| 48000 · TRANSFERS IN | | | |
| 48400 · Transfer Admin from Project Fd | 7,260.10 | 8,816.21 | -1,556.11 |
| Total 48000 · TRANSFERS IN | 7,260.10 | 8,816.21 | -1,556.11 |
| Total Income | 772,817.24 | 789,534.75 | -16,717.51 |
| Gross Profit | 772,817.24 | 789,534.75 | -16,717.51 |
| Expense | | | |
| 60000 · MATERIALS & SERVICES | | | |
| 61300 · CONFERENCES AND TRAINING | | | |
| 61310 · Lodging | 879.43 | 728.56 | 150.87 |
| 61320 · Meals/per diem | 0.00 | 355.25 | -355.25 |
| 61330 · Registration | 3,085.88 | 3,199.75 | -113.87 |
| 61340 · Training and Education Material | 1,177.07 | 880.00 | 297.07 |
| 61300 · CONFERENCES AND TRAINING - Other | 0.00 | 126.00 | -126.00 |
| Total 61300 · CONFERENCES AND TRAINING | 5,142.38 | 5,289.56 | -147.18 |
| 61500 · COMMUNITY CONSERVATION PROGRAMS | | | |
| 61510 · Conservation Education (Youth) | 14,144.30 | 6,024.58 | 8,119.72 |
| 61520 · Conservation Incentive Program | 12,000.00 | 416.31 | 11,583.69 |
| 61530 · Invasives Program | 1,500.00 | 1,594.01 | -94.01 |
| 61540 · Native Plant Sale | 19,295.64 | 18,342.99 | 952.65 |
| 61560 · Scholarships/Internships | 0.00 | 6,000.00 | -6,000.00 |
| 61570 · Soil Quality Program | 3,495.52 | 1,136.26 | 2,359.26 |
| 61595 · Jerry Paul Native Poll Con Prog | 5,335.00 | 6,750.00 | -1,415.00 |
| 61500 · COMMUNITY CONSERVATION PROGRAMS | 228.00 | 0.00 | 228.00 |
| Total 61500 · COMMUNITY CONSERVATION PROGRAMS | 55,998.46 | 40,264.15 | 15,734.31 |
| 62100 · CONTRACTED AND PROF SERVICES | | | |
| 62115 · Audit | 7,400.00 | 5,800.00 | 1,600.00 |
| 62120 · Computer Support | 4,613.74 | 3,603.18 | 1,010.56 |
| 62130 · PROFESSIONAL SERVICES | | | |

Benton Soil & Water Conservation District
Profit & Loss YTD Comparison
July 2025 through March 2026

| | Jul '25 - Mar 26 | Jul '24 - Mar 25 | Change |
|--|-----------------------------|-----------------------------|-------------------|
| 62140 · Legal | 1,083.00 | 1,368.00 | -285.00 |
| 62150 · Accounting | 15,031.93 | 14,370.40 | 661.53 |
| 62160 · Facilitation | 0.00 | 4,728.64 | -4,728.64 |
| 62170 · Web Design, Logo - Marketing | 3,686.25 | 0.00 | 3,686.25 |
| Total 62130 · PROFESSIONAL SERVICES | 19,801.18 | 20,467.04 | -665.86 |
| 62180 · Consultation/Contracts | 0.00 | 11,810.13 | -11,810.13 |
| 62190 · Misc Contracted Services | 0.00 | 286.00 | -286.00 |
| Total 62100 · CONTRACTED AND PROF SERVICE | 31,814.92 | 41,966.35 | -10,151.43 |
| 62300 · Dues/Subscriptions/Fees | 12,337.43 | 13,082.12 | -744.69 |
| 62800 · OFFICE OCCUPANCY | | | |
| 62810 · Alarm & Janitorial Services | 1,140.00 | 99.00 | 1,041.00 |
| 62820 · Rent & Parking | 34,487.09 | 26,288.50 | 8,198.59 |
| 62830 · Utilities | 7,267.43 | 4,326.02 | 2,941.41 |
| 62840 · Other | 0.00 | 2,611.85 | -2,611.85 |
| 62800 · OFFICE OCCUPANCY - Other | 0.00 | 28.98 | -28.98 |
| Total 62800 · OFFICE OCCUPANCY | 42,894.52 | 33,354.35 | 9,540.17 |
| 65000 · SUPPLIES AND MATERIALS | | | |
| 65010 · COPIER AND SUPPLIES | | | |
| 65012 · Copies | 236.76 | 135.93 | 100.83 |
| 65014 · Lease | 1,447.70 | 1,447.18 | 0.52 |
| Total 65010 · COPIER AND SUPPLIES | 1,684.46 | 1,583.11 | 101.35 |
| 65020 · Equipment | 5,017.45 | 2,776.53 | 2,240.92 |
| 65030 · Office Supplies | 1,757.02 | 1,780.92 | -23.90 |
| 65040 · Postage | 197.58 | 102.04 | 95.54 |
| 65050 · Software/Computer Accessories | 276.16 | 2,073.24 | -1,797.08 |
| 65000 · SUPPLIES AND MATERIALS - Other | 0.00 | 144.63 | -144.63 |
| Total 65000 · SUPPLIES AND MATERIALS | 8,932.67 | 8,460.47 | 472.20 |
| 65110 · PRODUCTION COSTS | | | |
| 65112 · Advertising | 362.82 | 3,620.27 | -3,257.45 |
| 65114 · Merchandise | 899.76 | 1,783.36 | -883.60 |
| 65116 · Newsletters | 450.19 | 509.85 | -59.66 |
| 65118 · Publications | 0.00 | 264.00 | -264.00 |
| Total 65110 · PRODUCTION COSTS | 1,712.77 | 6,177.48 | -4,464.71 |
| 65120 · Insurance & Fidelity Bond | 5,396.53 | 4,962.65 | 433.88 |
| 65160 · Miscellaneous | 0.00 | 27.04 | -27.04 |
| 65320 · Mileage/travel related expenses | 3,047.72 | 2,193.30 | 854.42 |
| 65400 · Meetings & Events | 6,490.67 | 6,166.10 | 324.57 |
| Total 60000 · MATERIALS & SERVICES | 173,768.07 | 161,943.57 | 11,824.50 |
| 66000 · PAYROLL EXPENSES | | | |
| 66200 · Wages | 325,597.62 | 342,905.06 | -17,307.44 |

Benton Soil & Water Conservation District
Profit & Loss YTD Comparison
 July 2025 through March 2026

| | Jul '25 - Mar 26 | Jul '24 - Mar 25 | Change |
|---|-----------------------------|-----------------------------|-----------------|
| 66410 · Health, Dental & Life Insurance | 43,814.05 | 44,521.52 | -707.47 |
| 66420 · Retirement | 17,211.63 | 20,769.33 | -3,557.70 |
| 66500 · Payroll Taxes | | | |
| 66510 · FICA Employer | 0.00 | 26,357.85 | -26,357.85 |
| 66520 · SUTA | 0.00 | 2,112.87 | -2,112.87 |
| 66530 · OR-WBF | 0.00 | 79.35 | -79.35 |
| 66500 · Payroll Taxes - Other | 27,349.76 | 0.01 | 27,349.75 |
| Total 66500 · Payroll Taxes | 27,349.76 | 28,550.08 | -1,200.32 |
| 66600 · Bonuses | 700.00 | 1,600.00 | -900.00 |
| Total 66000 · PAYROLL EXPENSES | 414,673.06 | 438,345.99 | -23,672.93 |
| 68000 · PROJECT-MATERIALS & SERVICES | | | |
| 68010 · Project Contracted Services | 33,885.95 | 39,426.74 | -5,540.79 |
| 68020 · Project Mileage & Travel | 525.28 | 542.23 | -16.95 |
| 68040 · Project Supplies & Materials | 29,265.45 | 19,351.51 | 9,913.94 |
| 68050 · Project Training | 0.00 | 295.29 | -295.29 |
| 68000 · PROJECT-MATERIALS & SERVICES - Oth | 0.00 | 9,655.58 | -9,655.58 |
| Total 68000 · PROJECT-MATERIALS & SERVICES | 63,676.68 | 69,271.35 | -5,594.67 |
| 69400 · TRANSFERS OUT | | | |
| 69440 · Trf PF to General Fund | 7,260.10 | 8,816.21 | -1,556.11 |
| Total 69400 · TRANSFERS OUT | 7,260.10 | 8,816.21 | -1,556.11 |
| Total Expense | 659,377.91 | 678,377.12 | -18,999.21 |
| Net Ordinary Income | 113,439.33 | 111,157.63 | 2,281.70 |
| Net Income | 113,439.33 | 111,157.63 | 2,281.70 |

Benton Soil & Water Conservation District
P&L Budget vs. Actual GENERAL FUND
 July 2025 through March 2026

| | Jul '25 - Mar 26 | Budget | \$ Over Budget | % of Budget |
|--|---------------------|---------------------|--------------------|----------------|
| Ordinary Income/Expense | | | | |
| Income | | | | |
| 43000 · Beginning Balance | 0.00 | 767,205.00 | -767,205.00 | 0.0% |
| 44530 · Benton County Public Works | 0.00 | 5,000.00 | -5,000.00 | 0.0% |
| 44535 · Taxes Levied | 537,290.06 | 530,000.00 | 7,290.06 | 101.38% |
| 44540 · ODA Operations | 22,762.50 | 30,350.00 | -7,587.50 | 75.0% |
| 44545 · ODA Tech, LMA & Scope of Work | 53,109.00 | 70,812.00 | -17,703.00 | 75.0% |
| 45000 · Interest Income | 29,992.36 | 25,000.00 | 4,992.36 | 119.97% |
| 46430 · MISCELLANEOUS | | | | |
| 46432 · Contributions | 3,350.75 | | | |
| 46440 · Refunds and Reimbursements | 3,871.50 | | | |
| 46430 · MISCELLANEOUS - Other | 0.00 | 3,692.79 | -3,692.79 | 0.0% |
| Total 46430 · MISCELLANEOUS | 7,222.25 | 3,692.79 | 3,529.46 | 195.58% |
| 47400 · Native Plant Sale Income | 29,011.94 | 20,000.00 | 9,011.94 | 145.06% |
| 48000 · TRANSFERS IN | | | | |
| 48400 · Transfer Admin from Project Fd | 7,260.10 | 37,293.00 | -30,032.90 | 19.47% |
| Total 48000 · TRANSFERS IN | 7,260.10 | 37,293.00 | -30,032.90 | 19.47% |
| Total Income | 686,648.21 | 1,489,352.79 | -802,704.58 | 46.1% |
| Gross Profit | 686,648.21 | 1,489,352.79 | -802,704.58 | 46.1% |
| Expense | | | | |
| 60000 · MATERIALS & SERVICES | | | | |
| 61300 · CONFERENCES AND TRAINING | | | | |
| 61310 · Lodging | 879.43 | | | |
| 61330 · Registration | 3,085.88 | | | |
| 61340 · Training and Education Mate | 1,177.07 | | | |
| 61300 · CONFERENCES AND TRAINING | 0.00 | 13,950.00 | -13,950.00 | 0.0% |
| Total 61300 · CONFERENCES AND TRAINING | 5,142.38 | 13,950.00 | -8,807.62 | 36.86% |
| 61500 · COMMUNITY CONSERVATION PROGRAMS | | | | |
| 61510 · Conservation Education (You | 14,144.30 | 14,600.00 | -455.70 | 96.88% |
| 61520 · Conservation Incentive Progi | 12,000.00 | 22,989.00 | -10,989.00 | 52.2% |
| 61530 · Invasives Program | 1,500.00 | 2,500.00 | -1,000.00 | 60.0% |
| 61540 · Native Plant Sale | 19,295.64 | 23,170.00 | -3,874.36 | 83.28% |
| 61560 · Scholarships/Internships | 0.00 | 6,000.00 | -6,000.00 | 0.0% |
| 61570 · Soil Quality Program | 3,495.52 | 8,045.00 | -4,549.48 | 43.45% |
| 61585 · Conservation Leadership - El | 0.00 | 800.00 | -800.00 | 0.0% |
| 61595 · Jerry Paul Native Poll Con Pr | 5,335.00 | 5,300.00 | 35.00 | 100.66% |
| 61500 · COMMUNITY CONSERVATIO | 228.00 | | | |
| Total 61500 · COMMUNITY CONSERVAT | 55,998.46 | 83,404.00 | -27,405.54 | 67.14% |
| 62100 · CONTRACTED AND PROF SERVICES | | | | |
| 62115 · Audit | 7,400.00 | 7,400.00 | 0.00 | 100.0% |

Benton Soil & Water Conservation District
P&L Budget vs. Actual GENERAL FUND
July 2025 through March 2026

| | Jul '25 - Mar 26 | Budget | \$ Over Budget | % of Budget |
|---|-----------------------------|-------------------|---------------------------|------------------------|
| 62120 · Computer Support | 4,613.74 | 5,500.00 | -886.26 | 83.89% |
| 62130 · PROFESSIONAL SERVICES | | | | |
| 62140 · Legal | 1,083.00 | | | |
| 62150 · Accounting | 15,031.93 | 39,500.00 | -24,468.07 | 38.06% |
| 62160 · Facilitation | 0.00 | 2,500.00 | -2,500.00 | 0.0% |
| 62170 · Web Design, Logo - Mark | 3,686.25 | | | |
| Total 62130 · PROFESSIONAL SERVI | 19,801.18 | 42,000.00 | -22,198.82 | 47.15% |
| 62180 · Consultation/Contracts | 0.00 | 3,600.00 | -3,600.00 | 0.0% |
| Total 62100 · CONTRACTED AND PROF | 31,814.92 | 58,500.00 | -26,685.08 | 54.38% |
| 62300 · Dues/Subscriptions/Fees | 12,337.43 | 25,042.79 | -12,705.36 | 49.27% |
| 62800 · OFFICE OCCUPANCY | | | | |
| 62810 · Alarm & Janitorial Services | 1,140.00 | 1,500.00 | -360.00 | 76.0% |
| 62820 · Rent & Parking | 34,487.09 | 50,195.00 | -15,707.91 | 68.71% |
| 62830 · Utilities | 7,267.43 | 11,500.00 | -4,232.57 | 63.2% |
| Total 62800 · OFFICE OCCUPANCY | 42,894.52 | 63,195.00 | -20,300.48 | 67.88% |
| 65000 · SUPPLIES AND MATERIALS | | | | |
| 65010 · COPIER AND SUPPLIES | | | | |
| 65012 · Copies | 236.76 | | | |
| 65014 · Lease | 1,447.70 | | | |
| 65010 · COPIER AND SUPPLIES - | 0.00 | 2,500.00 | -2,500.00 | 0.0% |
| Total 65010 · COPIER AND SUPPLIES | 1,684.46 | 2,500.00 | -815.54 | 67.38% |
| 65020 · Equipment | 5,017.45 | 6,000.00 | -982.55 | 83.62% |
| 65030 · Office Supplies | 1,757.02 | 2,500.00 | -742.98 | 70.28% |
| 65040 · Postage | 197.58 | 400.00 | -202.42 | 49.4% |
| 65050 · Software/Computer Accessori | 276.16 | 4,000.00 | -3,723.84 | 6.9% |
| Total 65000 · SUPPLIES AND MATERIAL | 8,932.67 | 15,400.00 | -6,467.33 | 58.0% |
| 65110 · PRODUCTION COSTS | | | | |
| 65112 · Advertising | 362.82 | 2,500.00 | -2,137.18 | 14.51% |
| 65114 · Merchandise | 899.76 | 1,000.00 | -100.24 | 89.98% |
| 65116 · Newsletters | 450.19 | 650.00 | -199.81 | 69.26% |
| 65118 · Publications | 0.00 | 200.00 | -200.00 | 0.0% |
| Total 65110 · PRODUCTION COSTS | 1,712.77 | 4,350.00 | -2,637.23 | 39.37% |
| 65120 · Insurance & Fidelity Bond | 5,396.53 | 10,000.00 | -4,603.47 | 53.97% |
| 65160 · Miscellaneous | 0.00 | 200.00 | -200.00 | 0.0% |
| 65320 · Mileage/travel related expenses | 3,047.72 | 5,183.00 | -2,135.28 | 58.8% |
| 65400 · Meetings & Events | 6,490.67 | 8,500.00 | -2,009.33 | 76.36% |
| Total 60000 · MATERIALS & SERVICES | 173,768.07 | 287,724.79 | -113,956.72 | 60.39% |
| 66000 · PAYROLL EXPENSES | | | | |
| 66200 · Wages | 303,670.69 | 442,647.00 | -138,976.31 | 68.6% |
| 66410 · Health, Dental & Life Insurance | 41,625.02 | 81,278.00 | -39,652.98 | 51.21% |

Benton Soil & Water Conservation District
P&L Budget vs. Actual GENERAL FUND
 July 2025 through March 2026

| | Jul '25 - Mar 26 | Budget | \$ Over Budget | % of Budget |
|--|-----------------------------|---------------------|---------------------------|------------------------|
| 66420 · Retirement | 16,303.43 | 23,985.00 | -7,681.57 | 67.97% |
| 66500 · Payroll Taxes | 25,515.47 | 39,197.00 | -13,681.53 | 65.1% |
| 66600 · Bonuses | 700.00 | 950.00 | -250.00 | 73.68% |
| 66800 · Fees | 0.00 | 350.00 | -350.00 | 0.0% |
| Total 66000 · PAYROLL EXPENSES | 387,814.61 | 588,407.00 | -200,592.39 | 65.91% |
| 69100 · Capital Outlay | 0.00 | 5,000.00 | -5,000.00 | 0.0% |
| 69200 · Contingency | 0.00 | 50,000.00 | -50,000.00 | 0.0% |
| 69600 · Reserved for Future Expenditure | 0.00 | 207,603.00 | -207,603.00 | 0.0% |
| 69800 · Unappropriated Fund Balance | 0.00 | 350,618.00 | -350,618.00 | 0.0% |
| Total Expense | 561,582.68 | 1,489,352.79 | -927,770.11 | 37.71% |
| Net Ordinary Income | 125,065.53 | 0.00 | 125,065.53 | 100.0% |
| Net Income | 125,065.53 | 0.00 | 125,065.53 | 100.0% |

Benton Soil & Water Conservation District
P&L Budget vs Actual PROJECT FUND
 July 2025 through March 2026

| | Jul '25 - Mar 26 | Budget | \$ Over Budget | % of Budget |
|---|-----------------------------|--------------------|---------------------------|------------------------|
| Ordinary Income/Expense | | | | |
| Income | | | | |
| 43300 · Grant/Project Administration | 86,169.03 | 337,266.00 | -251,096.97 | 25.55% |
| Total Income | <u>86,169.03</u> | <u>337,266.00</u> | <u>-251,096.97</u> | <u>25.55%</u> |
| Gross Profit | 86,169.03 | 337,266.00 | -251,096.97 | 25.55% |
| Expense | | | | |
| 66000 · PAYROLL EXPENSES | | | | |
| 66200 · Wages | 21,926.93 | 70,205.00 | -48,278.07 | 31.23% |
| 66410 · Health, Dental & Life Insurance | 2,189.03 | 13,857.00 | -11,667.97 | 15.8% |
| 66420 · Retirement | 908.20 | 4,146.00 | -3,237.80 | 21.91% |
| 66500 · Payroll Taxes | 1,834.29 | 6,418.00 | -4,583.71 | 28.58% |
| Total 66000 · PAYROLL EXPENSES | <u>26,858.45</u> | <u>94,626.00</u> | <u>-67,767.55</u> | <u>28.38%</u> |
| 68000 · PROJECT-MATERIALS & SERVICES | | | | |
| 68010 · Project Contracted Services | 33,885.95 | | | |
| 68020 · Project Mileage & Travel | 525.28 | | | |
| 68040 · Project Supplies & Materials | 29,265.45 | | | |
| 68000 · PROJECT-MATERIALS & SERVICE! | 0.00 | 205,347.00 | -205,347.00 | 0.0% |
| Total 68000 · PROJECT-MATERIALS & SERVIC | <u>63,676.68</u> | <u>205,347.00</u> | <u>-141,670.32</u> | <u>31.01%</u> |
| 69400 · TRANSFERS OUT | | | | |
| 69440 · Trf PF to General Fund | 7,260.10 | 37,293.00 | -30,032.90 | 19.47% |
| Total 69400 · TRANSFERS OUT | <u>7,260.10</u> | <u>37,293.00</u> | <u>-30,032.90</u> | <u>19.47%</u> |
| Total Expense | <u>97,795.23</u> | <u>337,266.00</u> | <u>-239,470.77</u> | <u>29.0%</u> |
| Net Ordinary Income | <u>-11,626.20</u> | <u>0.00</u> | <u>-11,626.20</u> | <u>100.0%</u> |
| Net Income | <u>-11,626.20</u> | <u>0.00</u> | <u>-11,626.20</u> | <u>100.0%</u> |

| Project Name | Grant # | Funding Agency | Start Date | End Date | Status | Final Report Due Date | Fund Amount | (INCOME) Received to Date | Earned Income to Date | (EXPENSES) Spent to | Unearned Funds | Remaining balance to | Grant Manager | Grant Report Dates | How grant funds are received | Admin Expected | Admin Earned | Admin Remaining |
|------------------------------------|----------------|----------------|------------|------------|----------------|-----------------------|----------------|---------------------------|-----------------------|---------------------|----------------|----------------------|---------------|---|--|----------------|---------------|-----------------|
| WRAWMP X | 2024-37-012 | OSWB | 2/15/2024 | 7/31/2025 | Closed this FY | 9/29/2025 | 27,972 | 27,756 | 27,756 | 27,756 | 0 | 216 | MA | 9/30/2024 & Final Report: 9/29/2025 | | 2,543 | 2,523 | 20 |
| Willamette River EDRR Weeds | 2025-38-016 | OSWB | 2/24/2025 | 8/31/2026 | Open | 10/30/2026 | 30,263 | 22,697 | 17,073 | 17,073 | 5,624 | 7,566 | MA | 9/30/25 (interim report);10/29/26 (final) | | 2,752 | 1,552 | 1,200 |
| Purge the Spurge Phase 5 | 2025-38-015 | OSWB | 2/24/2025 | 4/30/2026 | Open | 6/29/2026 | 15,618 | 11,714 | 10,228 | 10,228 | 1,486 | 3,905 | MA | 9/30/25 (interim report); 6/29/26 (final) | | 1,420 | 1,073 | 347 |
| Purge the Mustard-Spurge | 2026-39-020 | OSWB | 3/1/2026 | 4/30/2027 | Open | 6/30/2027 | 13,009 | 0 | 0 | 0 | 13,009 | 13,009 | CD | 9/30/26 (interim report); 6/30/27 (final) | | 1,183 | 0 | 1,183 |
| Mid-Willamette River EDRR II | 2026-39-021 | OSWB | 3/1/2026 | 4/30/2027 | Open | 6/30/2027 | 26,892 | 0 | 0 | 0 | 26,892 | 26,892 | TV | 9/30/26 (interim report); 6/30/27 (final) | | 2,445 | 0 | 2,445 |
| OWEB Oak Stakeholder | 223-3044-23047 | OWEB | 10/25/2023 | 12/31/2026 | Open | 2/28/2027 | 34,130 | 16,174 | 17,545 | 17,545 | -1,371 | 17,956 | MA | Project Completion Report: 2/28/2027 | When expenses >\$250 occur; invoices and financial tracking spreadsheet submitted | 3,413 | 2,074 | 1,339 |
| Mitchell Oak | 222-3016-22326 | OWEB | 10/25/2022 | 6/30/2026 | Open | 8/29/2026 | 96,646 | 67,641 | 92,314 | 92,314 | -24,673 | 29,005 | MA | Project completion report: 6/30/2026, PISR, 6/30/2029, 6/30/2031 | When expenses >\$250 occur; invoices and financial tracking spreadsheet submitted | 87,860 | 7,907 | 79,953 |
| J2E RTR Project | 220-3033-17504 | OWEB | 4/22/2020 | 4/30/2026 | Open | 6/29/2026 | 239,915 | 215,154 | 232,443 | 232,443 | -17,290 | 24,761 | MA | 6/30/2028 and 6/30/2030 | When expenses >\$250 occur; invoices and financial tracking spreadsheet submitted | 23,084 | 19,857 | 3,227 |
| Four Oaks Farm Fencing | 224-8010-24281 | OWEB | 4/1/2025 | 4/1/2027 | Open | 4/30/2025 | 14,527 | 0 | 0 | 0 | | 14,527 | BR | 4/30/2027; 4/30/29 | | 1,895 | | 1,895 |
| OWEB SIA grant | 218-8010-16782 | OWEB | 3/4/2019 | 12/22/2026 | Open | 2/20/2027 | 125,000 | 111,396 | 112,094 | 112,094 | -698 | 13,604 | MA | Multiple dates (6/17/2019, 12/16/2019, 6/14/2020, 12/14/2020, 6/14/2021, 12/13/2021, 6/13/2022, 12/13/2022, 12/22/2023, 12/22/2024, 12/22/2025, 12/22/2026) | When expenses >\$250 occur; invoices and financial tracking spreadsheet submitted | 11,364 | 10,119 | 1,245 |
| Rainshine Orchard Riparian Res | 11-24-004 | OWEB | 8/15/2024 | 7/9/2026 | Closed this FY | 9/7/2026 | 11,820 | 11,820 | 11,820 | 11,820 | 0 | 0 | MA | 9/7/2026, 9/7/2028 | no funds received at start of grant; funds received by reimbursement of invoices/receipts submitted by BSWCD two times total (including final); OWEB holds last 10% of funds until they receive and approve of Final Report at end of grant. | 1,075 | 1,075 | 0 |
| Grand Oaks Oak Release | 09-24-001 | OWEB | 2/26/2024 | 1/11/2026 | Open | 5/11/2026 | 14,968 | 9,826 | 9,826 | 9,826 | 0 | 5,143 | MA | 1/11/2026, 1/11/2028 | no funds received at start of grant; funds received by reimbursement of invoices/receipts submitted by BSWCD two times total (including final); OWEB holds | 1,361 | 893 | 468 |
| Poop Palace | 09-24-002 | OWEB | 5/12/2025 | 5/12/2027 | Open | 5/31/2027 | 14,950 | 0 | 0 | 0 | | 14,950 | BR | 5/31/27; 5/31/29 | no funds received at start of grant; funds received by reimbursement of invoices/receipts submitted by BSWCD two times total (including final); OWEB holds | 1,950 | 0 | 1,950 |
| Middle Muddy Oliver Creek SIA | 226-8010-24830 | OWEB | 2/17/2026 | 3/31/2029 | Open | 5/31/2029 | 32,736 | 0 | 0 | 0 | 32,736 | 32,736 | TV | 5/31/2029 | no funds received at start of grant; funds received by reimbursement of invoices/receipts submitted by BSWCD two times total (including final); OWEB holds last 10% of funds until they receive and approve of Final Report at end of grant. | 4,270 | 0 | 4,270 |
| Private Oak Lands in Benton County | 226-3018-24565 | OWEB | 7/22/2025 | 12/30/2030 | Open | 2/28/2030 | 100,000 | 0 | 0 | 0 | 100,000 | 100,000 | BR | 12/31/2026, 12/31/2027, 12/31/2028, 12/31/2029, 12/30/2030 | no funds received at start of grant; funds received by reimbursement of invoices/receipts submitted by BSWCD two times total (including final); OWEB holds last 10% of funds until they receive and approve of Final Report at end of grant. | 13,044 | 0 | 13,044 |
| Total | | | | | | | 798,446 | 494,176 | | | | 304,270 | | | | | 47,074 | 112,585 |