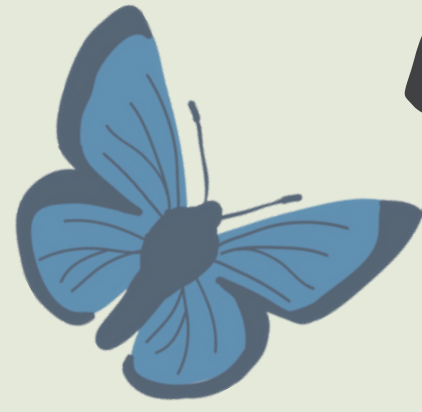


# WHY CHOOSE NATIVE PLANTS?

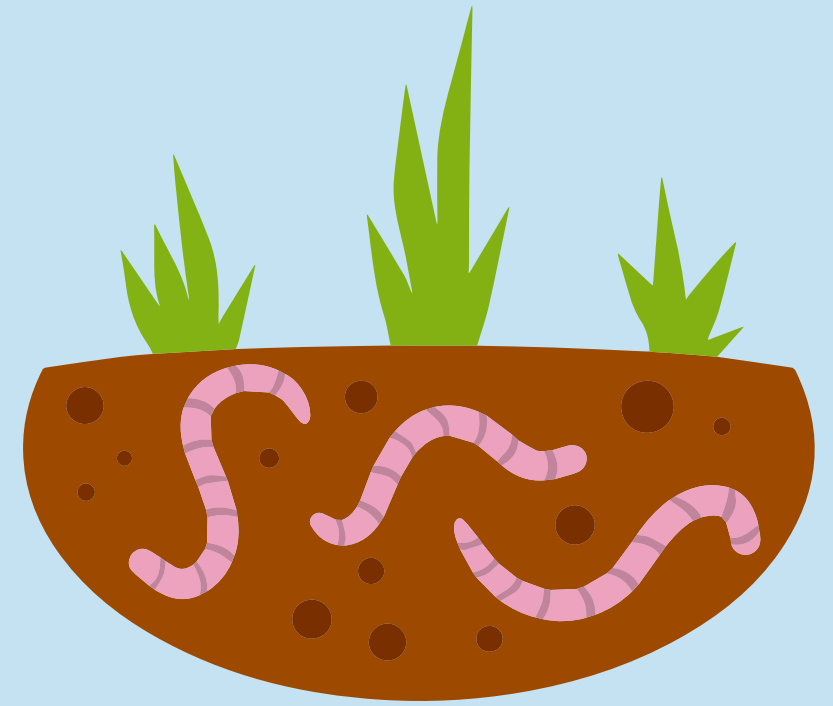


## support wildlife

native plants provide shelter and food for everything from bugs to bears, and are essential for the survival of many threatened species

## help soil

native plants have deep root systems that prevent erosion, capture nutrients, and support important soil microbes



## adapted to survive

native plants are adapted to local soils and climate, which can challenge non-native plants

## low maintenance

native plants need less water, don't need to be fertilized, and are resistant to pests and disease



Choose wisely.  
Choose natives!



Benton Soil and Water  
CONSERVATION DISTRICT