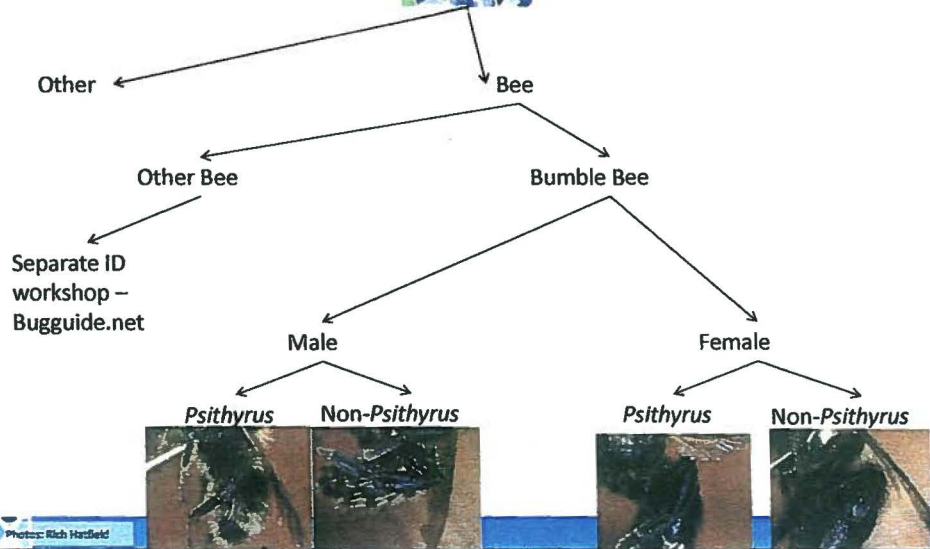


## Flow Chart for Bumble Bee ID



## Identifying Male and Female Bees

### Females

- Appear well groomed\*
- 6 abdominal segments\*
- Corbicula (pollen-basket)\*
- Antenna with 10 flagellomeres
- Stinger



female abdomen  
6 segments



male abdomen  
7 segments

### Males

- Shaggy appearance\*
- 7 abdominal segments\*
- Some have enlarged eyes
- Antennae with 11 flagellomeres\*
- No stinger



female antenna  
12 segments



male antenna  
13 segments



female leg  
wider

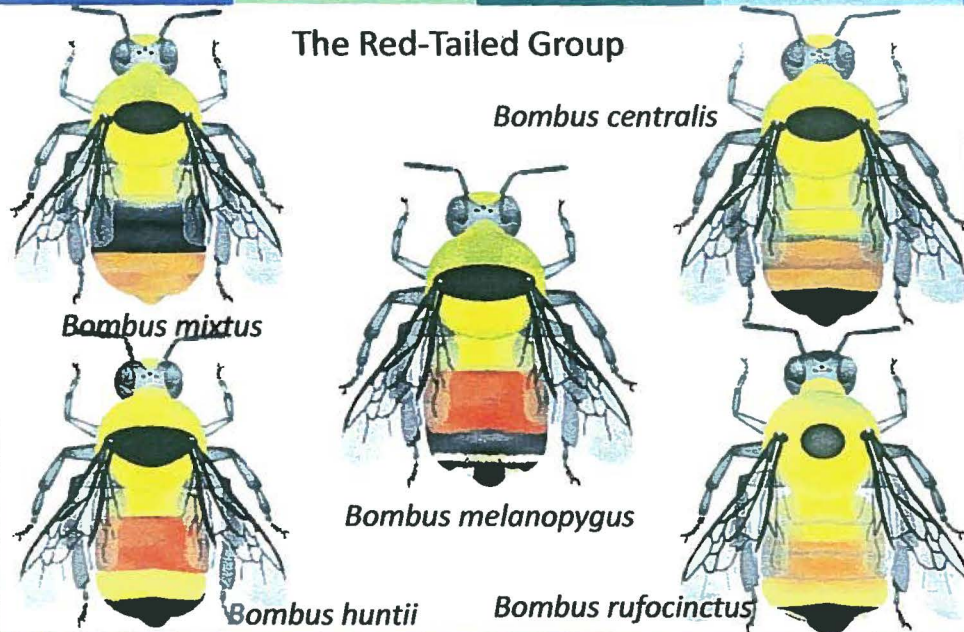
male leg  
thinner

Images courtesy Elaine Evans

## Bumble bees of the PNW

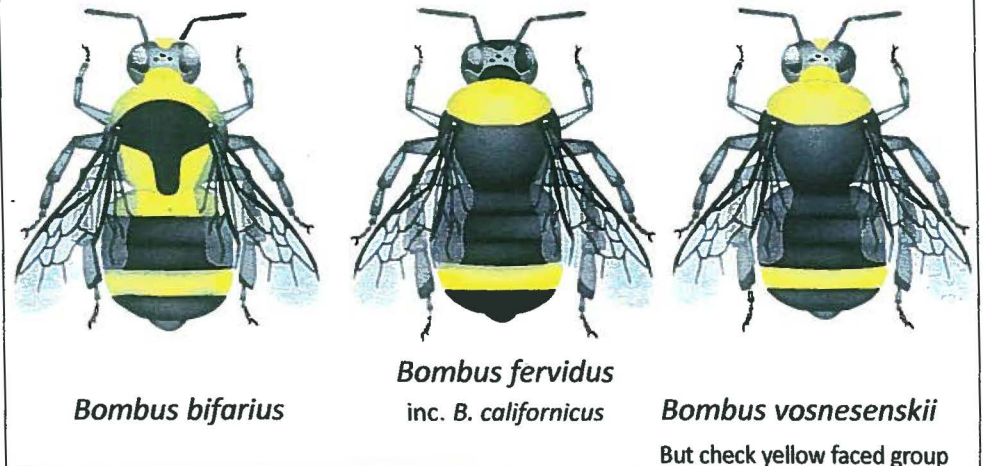
Species illustrations by Evans and Hatfield

### The Red-Tailed Group



## Bumble bees of the PNW

### The Striped Group

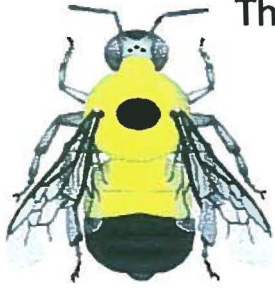


Species illustrations by Evans and Hatfield

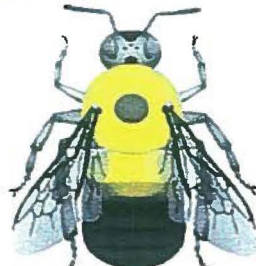


## Bumble bees of the PNW

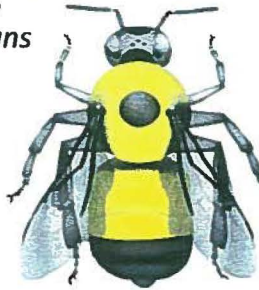
### The Black-Tailed Group



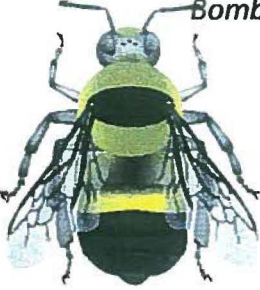
*Bombus vagans*



*Bombus griseocollis*



*Bombus nevadensis*



*Bombus flavifrons*

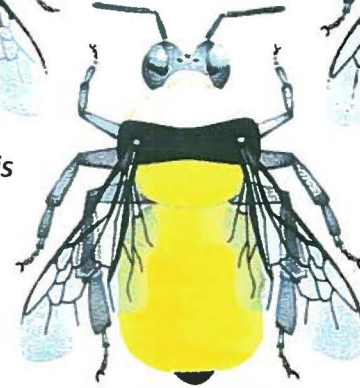
Species Illustrations by Evans and Hatfield

## Bumble bees of the PNW

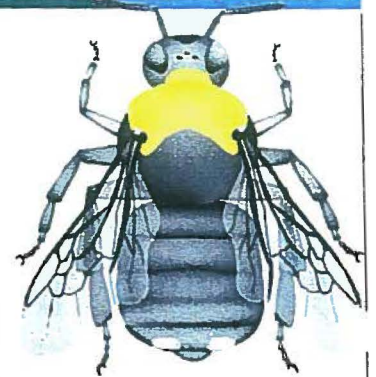
### The Whites



*Bombus occidentalis*



*Bombus appositus*



*Bombus franklini*

Species Illustrations by Evans and Hatfield

## Bumble bees of the PNW

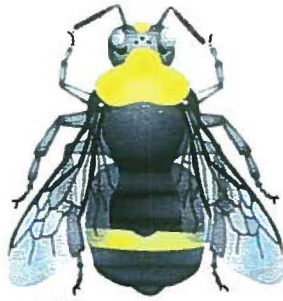
Difficult species groups: Yellow faced bumble bees

*B. caliginosus*



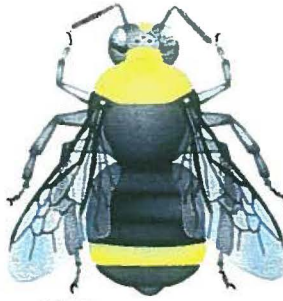
- Yellow on T4
- Yellow on S3 and S4
- Slightly long cheek
- Hair short and uneven

*B. vandykei*



- Yellow on T3
- Yellow on S2-5
- Slightly long cheek
- Hair medium and uneven

*B. vosnesenskii*



- Yellow on T4
- All black belly
- Square cheek
- Hair short and even

Species Illustrations by Evans and Hatfield

## Bumble bees of the PNW

Difficult species groups: The Cuckoo Bees

*B. flavidus*



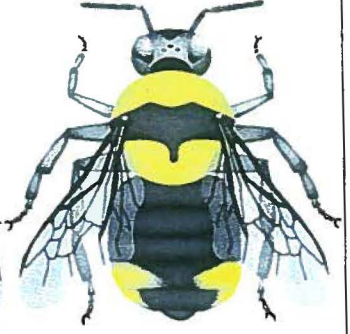
- No Pollen Basket!
- Black Face
- Yellow on T4
- Hair long and uneven
- Be careful with *B. fervidus*

*B. insularis*



- No Pollen Basket!
- Yellow Face
- Yellow on T4
- Be careful with yellow-faced group

*B. suckleyi*



- No Pollen Basket!
- Black Face
- Yellow on scutellum
- Yellow on T4
- Hair short and even
- Be careful with *B. bifarius*

Species Illustrations by Evans and Hatfield