



Horizons

Winter 2010-2011 Volume 20 Issue 1

SERVING BENTON COUNTY OREGON SINCE 1956

2011 Native Plant Sale - place your order now!

Inside this Issue

- Conservation Calendar
- NRCS Award
- Riparian Project Funding
- Intern David Weiner
- Guidelines for Plantings
- Native Plant Sale Order Form
- Plant Descriptions
- Gift Certificates and Volunteer
- Mission, Board & Staff

On-line ordering by credit card now available.

<http://plantsale.bentonswcd.org/pages/index.html>

Important Native Plant Sale Dates

- **Order Deadline - Friday, January 14**
- **Order Pick Up - Saturday, February 5**
at *Eichler's Hay Co.*
We will mail you a postcard with your pick-up time
- **Overstock Sale - Sunday, February 6**

New Plants for 2011

Maidenhair Fern
Adiantum pedatum

Western Buttercup
Ranunculus occidentalis

Blue Blossom
Ceanothus thrysiflorus

Wild Ginger
Asarum caudatum

I Grew That!!

by Bob Pearson

Eddyville Charter School Instructor

Eddyville Charter School is located about halfway between Corvallis and Newport, in Lincoln County. The unincorporated town has a few homes, a post office, and a small mushroom growing business, which is how most people not from the area remember the town's location. As a natural resources charter school, ECS provides K-12 education for two hundred students from a large geographic area; as far west as Newport to as remote as Harlan, a small town located near the west base of Marys Peak. Benton County students from Blodgett and Summit attend ECS.

ESC horticulture and agriculture



ECS students including, left to right, Linzy Rorie, Dakota Gassner, and Gage Pursifull, grew wild ginger for the 2011 Native Plant Sale.

education begins in the elementary years with raised bed gardening for first and fifth graders. High school students delve into a spectrum of topics during a course titled, Natural Resources. To offset the expense of this class and strive for a self-sufficient program, the students market horticultural and local natural resource products. Students manage 40+ mature dwarf and semi-dwarf apple trees, almost all of which are heirloom varieties originally introduced by the first settlers. These trees are pruned yearly and several varieties are grafted every other year for seedling sales.

The students and I built the 30' X 48' greenhouse when the charter school opened. Other horticulture and agriculture products include: spring flower and vegetable starts, firewood from a fifty year old student-planted forest, native riparian tree and shrub transplants, and, recently added, herbaceous native plants propagated from the forested school grounds.

Class profits allowed us to build a pig pen which the seniors manage; proceeds go to their senior trip fundraiser. This year the school added a chicken coop with fifteen chickens that are managed by the middle-schoolers; egg sales add to their fundraising stash. The high



ECS students, Cory Phibbs (left) and Josh Duncan, harvest wild ginger that is sustainably managed on the forested school grounds.

school students compost the animal manure. Good stuff!

The class is quite popular for those students who wish to get their hands dirty, and serves as relief from the more academic aspects of school life. Students have called the class "PE with a purpose!" By far, the biggest thrill for me is the statement of pride I hear when students smile at their parents and say "I grew that".

Programs such as ECS Natural Resources grow from the work of dedicated educators. 20 years ago, Bob was a student teacher under Eddyville instructor, Jeff Mitchell. Jeff moved to Philomath High School where he now teaches an ecology class that inspires PHS students to pursue college degrees in natural resources (read *New Intern - David Weiner - page 2*).

Winter Conservation Calendar 2010 - 2011

Date & Time Location	Event/Speaker	For more information contact:
Saturday, Dec. 4 10 AM - 3:30 PM <i>Bezell Forest Education Center</i>	Douglas-fir Forest: Focus on Soils & Forest Ecology An Educator Workshop <i>Sponsored by Oregon Natural Resources Education Program, OSU Extension Benton County 4-H Wildlife Stewards, Institute for Applied Ecology, Benton County Natural Areas and Parks and Benton SWCD</i>	Registration limit 20! No registration fee <ul style="list-style-type: none"> • Call Benton County OSU Extension 541-766-6750 • On-line: ONREP Workshop Calendar http://www.cof.orst.edu/onrep/
Friday, Jan. 6 6:30 - 9 PM <i>Benton County Fairgrounds Carriage House</i>	Rural Living Basics <ul style="list-style-type: none"> • Well and Septic System Care • Streamside Plants • Native Fish and Fish Traps in Oak Creek Area • Nitrate Screening - bring one cup well water <i>Co-sponsors: OSU Extension Service Groundwater Education Program, Oregon Department of Fish and Wildlife and BSWCD</i>	<i>Free and open to the public - limited to 40</i> Please RSVP <i>contact: Donna Schmitz</i> Benton SWCD 541-753-7208 dschmitz@bentonswcd.org
Saturday, Feb. 5 Pick up time TBA <i>Eichler Hay Co.</i>	Benton SWCD Native Plant Sale Each year the Benton SWCD provides low cost native plant seedlings for use in conservation projects and landscaping. Order deadline - January 14, 5PM!!!	Benton SWCD - (541) 753-7208 3 ways to order and pay: <ul style="list-style-type: none"> • Deliver order and payment to our office • Mail your order and payment • Order on-line with credit card at http://plantsale.bentonswcd.org/pages/index.html

Oregon Association of Conservation Districts Convention
 Sunriver, OR - Thursday, October 28
 We were honored to receive the

NRCS 2010 SWCD District Partnership Award



Left, Tom Bedell, Benton SWCD Board Chair, accepted the award from Ann Mills, USDA Deputy Under Secretary for Natural Resources and Environment

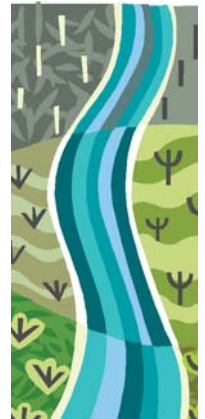
Funding Available for Riparian Projects

Protect Your Local Stream

Do you own property adjacent to a Benton County stream?

If so, you may qualify for financial assistance to plant trees and shrubs along the stream and/or build a fence to keep domestic animals out.

To find out if you qualify for assistance call Donna Schmitz 541-753-7208



New Education & Outreach Intern David Weiner

David is an OSU junior in Environmental Science with an emphasis in water resources. He developed an interest in natural resources as a Philomath High School ecology student. Since then, David has shared his love of nature with children and adults by helping to organize **Science Music and Marshmallows** and working at **KidSpirt Day Camp**. This school year, David will help BSWCD organize the 4th Annual Urban Creek Tour, various Weed Spotters events, and a kid-focused Water Fair.



For more information about these programs contact David at dweiner@bentonswcd.org or Heath Keirstead at hkeirstead@bentonswcd.org.

Follow these guidelines for native plantings

Plant purpose	Spacing	Plants/acre
Streambank stabilization	2' X 2'	10,890
Riparian plantings (shrubs)	4' X 4'	2723
Riparian plantings (trees)	8' X 8'	680
Reforestation (conifers and hardwoods)	6' X 6'	1210
Pulpwood	8' X 8'	680
Timber	6' X 10'	726
Windbreaks and privacy screens	3' to 8' apart	varies
Multi-row windbreaks and shelterbelts	6' in row 8'-10' between	908



Benton SWCD Native Plant Sale - Order Form
All orders must be received with payment by January 14, 2011

Plant Pick Up: Saturday, February 5, 2011

Please note: Order pick-up will be by appointment. We will contact you!

Name:		
Address:		
City:	State:	Zip:
Phone:	Email:	

Please indicate how you learned about the 2011 sale: Horizons flyer GT Thymes Extension Capital Press other _____

10% discount on orders of more than 99 of any one species

Quantity	Common name	Scientific name	Price	(\$)	Total
CONIFER TREE seedlings					
	Douglas Fir	<i>Pseudotsuga menziesii</i>	1.25	\$	
	Grand Fir	<i>Abies grandis</i>	1.25	\$	
	Incense-cedar	<i>Calocedrus decurrens</i>	2.75	\$	
	Noble Fir	<i>Abies procea</i>	1.25	\$	
	Western Hemlock	<i>Tsuga heterophylla</i>	1.75	\$	
	Western Red Cedar	<i>Thuja plicata</i>	1.25	\$	
	Willamette Ponderosa Pine	<i>Pinus ponderosa</i>	2.25	\$	
BROADLEAF TREE seedlings					
	Big Leaf Maple	<i>Acer macrophyllum</i>	1.75	\$	
	Black Cottonwood	<i>Populus trichocarpa</i>	1.50	\$	
	Cascara	<i>Rhamnus purshiana</i>	1.75	\$	
	Oregon Ash	<i>Fraxinus latifolia</i>	1.75	\$	
	Oregon White Oak	<i>Quercus garryana</i>	2.75	\$	
	Red Alder	<i>Alnus rubra</i>	1.75	\$	
	White Alder	<i>Alnus rhombifolia</i>	1.75	\$	
LARGE SHRUBS and SMALL TREE seedlings					
	Black Hawthorn	<i>Crataegus douglasii</i>	2.25	\$	
	Black Twinberry	<i>Lonicera involucrata</i>	2.25	\$	
	Blue Blossom - NEW!	<i>Ceanothus thrysiflorus</i>	2.75	\$	
	Elderberry-BLUE	<i>Sambucus caerulea</i>	2.75	\$	
	Elderberry-RED	<i>Sambucus racemosa</i>	2.25	\$	
	Indian Plum	<i>Oemleria cerasiformis</i>	2.75	\$	
	Mock Orange	<i>Philadelphus lewisii</i>	2.25	\$	
	Ocean Spray	<i>Holodiscus discolor</i>	2.25	\$	
	Pacific Crabapple	<i>Malus (pyrus) fusca</i>	2.25	\$	
	Pacific Dogwood	<i>Cornus nutalli</i>	2.25	\$	
	Pacific Ninebark	<i>Physocarpus capitatus</i>	2.25	\$	
	Pacific Willow	<i>Salix lucida var. lasiandra</i>	2.25	\$	
	Serviceberry	<i>Amelanchier alnifolia</i>	2.25	\$	
	Vine Maple	<i>Acer circinatum</i>	2.25	\$	
		SUBTOTAL		\$	

Visit our Native Plant web page to view pictures of this year's plants

<http://www.bentonswcd.org/projects/treesale>

Plant list continued on back!

Cut on line to submit order form with check



Quantity	Common name	Scientific name	Price	(\$)	Total
SMALL SHRUBS and GROUNDCOVER seedlings					
	Clustered Rose	<i>Rosa pisocarpa</i>	2.25	\$	
	Deer Fern	<i>Blechnum spicant</i>	4.00	\$	
	Douglas Spirea	<i>Spiraea douglasii</i>	2.25	\$	
	Dwarf Oregon Grape	<i>Mahonia repens</i>	2.25	\$	
	Evergreen Huckleberry	<i>Vaccinium ovatum</i>	2.25	\$	
	Golden Currant	<i>Ribes aureum</i>	2.25	\$	
	Maidenhair Fern - NEW!	<i>Adiantum pedatum</i>	3.50	\$	
	Nootka Rose	<i>Rosa nutkana</i>	2.25	\$	
	Red Flowering Currant	<i>Ribes sanguineum</i>	2.25	\$	
	Salal	<i>Gaultheria shallon</i>	2.25	\$	
	Salmonberry	<i>Rubus spectabilis</i>	2.25	\$	
	Snowberry	<i>Symphoricarpos albus</i>	2.25	\$	
	Sword Fern	<i>Polystichum munitum</i>	4.00	\$	
	Tall Oregon Grape	<i>Mahonia aquifolium</i>	2.25	\$	
	Thimbleberry	<i>Rubus parviflorus</i>	2.25	\$	
FLOWERS / GRASSES / GROUNDCOVER seedlings					
	Common selfheal	<i>Prunella vulgaris L.</i>	3.00	\$	
	Douglas Aster	<i>Aster subspicatus</i>	3.00	\$	
	Fringe Cup	<i>Tellima grandiflora</i>	3.00	\$	
	Goats Beard	<i>Aruncus dioicus</i>	3.00	\$	
	Great Camas	<i>Camassia leichtlinii</i>	1.25	\$	
	Meadow Checker-Mallow	<i>Sidalcea campestris</i>	3.00	\$	
	Milkweed	<i>Asclepias speciosa</i>	1.00	\$	
	Oregon Iris	<i>Iris tenax</i>	3.00	\$	
	Oregon Sunshine	<i>Eriophyllum lanatum</i>	3.00	\$	
	Red Columbine	<i>Aquilegia formosa</i>	3.00	\$	
	Roemer's Fescue	<i>Festuca roemeri</i>	3.00	\$	
	Slender Cinquefoil	<i>Potentilla gracilis</i>	3.00	\$	
	Streambank Lupine	<i>Lupinus rivularis</i>	3.00	\$	
	Tiger Lily	<i>Lilium columbianum</i>	1.50	\$	
	Tufted Hair Grass (Kalapuya)	<i>Deschampsia caespitosa</i>	0.50	\$	
	Western Buttercup - NEW!	<i>Ranunculus occidentalis</i>	2.00	\$	
	Western Geranium	<i>Geranium oregonum</i>	3.00	\$	
	Wild Ginger - NEW!	<i>Asarum caudatum</i>	2.00	\$	
	Wood Strawberry	<i>Fragaria vesca</i>	0.50	\$	
	Yarrow	<i>Achillea millefolium</i>	3.00	\$	
	Yellow Monkeyflower	<i>Mimulus gutatus</i>	3.00	\$	
		SUBTOTAL from this side		\$	
		SUBTOTAL from OTHER SIDE		\$	
		ORDER TOTAL		\$	

Plantskydd will be for sale on Plant Pick-up Day

Include payment with order **OR** order online <http://plantsale.bentonswcd.org/>

Make check or money order payable to Benton SWCD:

NEW ADDRESS: 456 SW Monroe Avenue, Suite 110, Corvallis OR 97333

Phone: 541-753-7208

Fax: 541-753-1871

email: office@bentonswcd.org

Pick-up location:

Eichler Hay Company
3079 NE Garden Avenue
Corvallis, Oregon
East off Hwy 20
North of Circle Blvd

Cut on line to submit order form with check



2011 NATIVE PLANT DESCRIPTIONS - see pages 5, 6 and 7

Special Conditions		Special Uses			
A Prefers full sun	1 Attracts insects, bees, and butterflies	3 Wildlife, forage, cover and food			
B Can tolerate sun or some shade	2a Birds	4 Bank stabilization			
C Prefers shade	2b Hummingbirds	5 Ornamental			
Plant Name	Mature Height	Sun	Soil Conditions	Special Uses	Comments
CONIFER TREES					
Douglas fir <i>Pseudotsuga menziesii</i>	200'+	A	Grows on all but wettest soil	Timber 1, 2a	Oregon State tree. Can live over 1000 years. Thick bark enables it to survive moderate fire.
Grand Fir <i>Abies grandis</i>	250'	B-C	Prefers moist sites	Timber, Xmas Tree	Tall conifer which is shade tolerant and suited to inter-planting in existing under-stocked forests.
Incense Cedar <i>Calocedrus decurrens</i>	100'	A	Prefers dry sites	2a, 3	Attractively shaped with dense foliage often used in home landscapes. Wood has pleasant odor.
Nobel Fir <i>Abies procea</i>	200'	A	Moist soil, well drained	Xmas trees	One of most highly prized Christmas tree species. Slow grower.
Western Hemlock <i>Tsuga heterophylla</i>	200'	A-C	Fairly dry to wet sites	Timber; 2a, 3	Attractively shaped, adaptable. Seedlings prefer to develop under shade. Utilized extensively by Native Americans. Seeds important food source for birds and small mammals.
Western Red Cedar <i>Thuja plicata</i>	180'	B	Moist to poorly drained	Timber: 1, 2a, 4, 5	Excellent for wildlife cover and for restoration projects. Ornamental. Fragrant wood and foliage.
Willamette Ponderosa Pine <i>Pinus ponderosa</i>	180'	A	Grows on wet and dry sites	Timber: 3	Native pine to Willamette Valley. Also known as Yellow Pine. Popular for its straight growth habit which exposes scaled colored bark with vanilla fragrance.
BROADLEAF TREES					
Big Leaf Maple <i>Acer macrophyllum</i>	100'	A-B	Moist, well drained soil	1, 3	Hardy and majestic. Makes great shade tree.
Black Cottonwood <i>Populus trichocarpa</i>	180'	A	Flood plains	Timber; 2a, 3, 4	Fast growing with dark gray bark. Important browse for deer and elk. Nesting habitat for large birds.
Cascara <i>Rhamnus purshiana</i>	30'	A-C	Moist, well drained soil	1, 2a	Also known as Chitum. Silver gray bark has medicinal purposes. Black berries attractive to birds.
Oregon Ash <i>Fraxinus latifolia</i>	75'	A	Wet areas, flood plains	Timber; 4	Grayish-brown bark and olive green leaves. Good restoration species. Abundant seed producer
Oregon White Oak <i>Quercus garryana</i>	100'	A	Well drained soil	Timber; 1, 2a, 2b	Oregon's hallmark native oak. Forms wide spreading branches and grows to 100 feet. Important wildlife species.
Red Alder <i>Alnus rubra</i>	75'	A	Moist soil wet areas	Timber; 1, 2a, 2b	Good species to plant along streams to provide shade and erosion control.
White Alder <i>Alnus rhombifolia</i>	40-80'	A-B	Moist soil	2a, 3, 4	Excellent shade and erosion control along streams. Tolerant of seasonal inundation and drought. Nitrogen fixing and cold hardy.
LARGE SHRUBS and SMALL TREES					
Black Hawthorn <i>Crataegus douglasii</i>	10 - 30'	A-B	Moist to well-drained soil	2a	Thicket-forming shrub or small tree. Clusters of small white flowers in spring. 1/4 inch blackish purple fruit in fall. Excellent cover and forage for birds and small mammals.
Black Twinberry <i>Lonicera involucrata</i>	12'	A-B	Moist forest, stream sides	1,3	Pretty, tubular yellow flowers develop into two dark berries per stem.
Blue Blossom <i>Ceanothus thyrsiflorus</i>	6-20'	A-B	adaptable & drought tolerant when established	1, 2a, 5	Evergreen foliage and blue to white flowers.
Elderberry – BLUE <i>Sambucus caerulea</i>	12'	A-C	Prefers well drained soils	1, 2a, 2b	Fast growing handsome shrub. Excellent food and cover species. White flower clusters, edible berries.
Elderberry – RED <i>Sambucus racemosa</i>	20'	A-C	Stream banks moist forest	1, 2a, 2b	Shrub with white flowers and red berries. Do not eat berries.
Indian Plum <i>Oemleria cerasiformis</i>	16'	A-C	Dry to moist soil	1, 2a, 2b	Early spring bloom (Feb/Mar). White flowers yield small purple edible plums. Highly sought by birds.
Mock Orange <i>Philadelphus lewisii</i>	12'	A-B	All but wet soil	1, 2a, 2b	Clusters of aromatic white flowers at branch ends. Attracts bees and butterflies. Plant at low elevation.

2011 NATIVE PLANT DESCRIPTIONS - LARGE SHRUBS AND SMALL TREES continued

Special Conditions		Special Uses			
A	Prefers full sun	1	Attracts insects, bees, and butterflies	3	Wildlife, forage, cover and food
B	Can tolerate sun or some shade	2a	Birds	4	Bank stabilization
C	Prefers shade	2b	Hummingbirds	5	Ornamental
Plant Name	Mature Height	Sun	Soil Conditions	Special Uses	Comments
Ocean Spray <i>Holodiscus discolor</i>	10'	B-C	Dry to moist soils	1, 2a	Multi-stemmed shrub with creamy white flowers. Used for riparian restoration and wildlife habitat.
Pacific Crabapple <i>Malus (pyrus) fusca</i>	40 - 60'	A-B	All soil types	1, 3, 5	Deciduous, flowers in May. Edible fruit eaten out of hand or made into jellies, preserves. Good source of pectin.
Pacific Dogwood <i>Cornus nuttalli</i>	60'	A, B, C	Moist, well drained soil	2a, 5	Beautiful tree. Whitish flowers that turn to red berries, loved by birds. Good fall color. Anthracnose susceptible.
Pacific Ninebark <i>Physocarpus capitatus</i>	12'	A-C	Moist, along wetlands	2a, 3	Large spreading, attractive shrub with round clusters of white flowers. Maple-like leaves, shreddy bark.
Pacific Willow <i>Salix lucida var. lasiandra</i>	45'	A	Moist, all soil types	1, 4	Deciduous tree, grows at fast rate. Flowers in April. Stem, bark used in basketry. Valuable reclamation plant.
Serviceberry, Pacific <i>Amelanchier alnifolia</i>	10 - 25'	A-B	Dry to moist soils	1, 2a, 3	Attractive foliage and white flowers. This is an important wildlife species.
Vine Maple <i>Acer circinatum</i>	25'	A-C	Moist soil	1, 2a, 2b, 3, 5	Attractive fall color. Suitable for shade ornamental or forest understory plant.
SMALL SHRUBS and GROUNDCOVERS					
Clustered Rose <i>Rosa pisocarpa</i>	3 - 5'	A	Moist sites	1, 2a, 3	Pale pink rose with sweet fragrance. Can be grown on a variety of sites with sunlight.
Deer Fern <i>Blechnum spicant</i>	8" - 2.5'	B-C	moist acidic soil	3, 5	Beautiful, elegant ornamental clumping fern.
Douglas Spirea <i>Spiraea douglasii</i>	3 - 6'	A-B	Prefers moist soils	1	Fast growing shrub forming beautiful pinkish spires in bloom (July). Attractive ornamental.
Evergreen Huckleberry <i>Vaccinium ovatum</i>	10 - 12' shade	A-C	Moist, well-drained acidic soil	2a, 3, 5	Optimal growth in partial shade, 2 - 3' in sun. Attractive pink bell flowers in spring, shiny dark green foliage. Edible berries.
Golden Currant <i>Ribes aureum</i>	3 - 6'	A-B	Moist to dry	1, 2a	Deciduous shrub. Yellow flowers April to May. Tolerates flooding and drought. Edible berries.
Maidenhair Fern <i>Adiantum pedatum</i>	6-24"	C	Moist	5	Ornamental value in shady spots
Nootka Rose <i>Rosa nutkana</i>	5 - 7'	A	Adaptable to most soils	1, 3	A common roadside species in the valley. Nootka rose has attractive pink blossoms (2" across) in summer.
Oregon Grape, dwarf <i>Mahonia repens</i>	12 - 15"	B	Occasional water	4, 5	Groundcover, erosion control, evergreen. Spreads to 3-4' wide. Yellow flowers, blue-black fruit.
Oregon Grape, tall <i>Mahonia aquifolium</i>	4 - 6'	A-C	Dry to fairly moist	1, 2a, 2b, 3, 5	State flower of Oregon, having holly like leaves and dark blue edible berries.
Red flowering currant <i>Ribes sanguineum</i>	4 - 8'	A-B	Best on well drained soils	1, 2a, 2b, 5	Beautiful ornamental shrub with flowers that may be white to deep red. Attracts butterflies and hummingbirds.
Salal <i>Gaultheria shallon</i>	2 - 3'	B	Dry to moist soils	1, 3, 5	Forms a dense low groundcover ideal for areas where tall shrubs are not desired but neither are weeds! Foliage used in floral arrangements.
Salmonberry <i>Rubus spectabilis</i>	13'	B-C	Seasonal flood, sand, clay	1, 2a, 3	Thornless deciduous bramble with raspberry-like fruit. Pink to red flower.
Snowberry <i>Symphoricarpos albus</i>	2 - 6'	A, B, C	Grows on dry to moist sites	1, 2a, 2b	Adaptable shrubs having attractive foliage and clusters of waxy white berries that persist through winter.
Sword Fern <i>Polystichum munitum</i>	3-5'	A, B, C	Moist	1, 5	Large clumping evergreen fern.
Thimbleberry <i>Rubus parviflorus</i>	3 - 6'	C	Moist forest	1, 2a	Tolerates seasonal flooding, deciduous, white fragrant flower and fruit.

Each year the Native Plant Sale raises around \$10,000 that we use as match for grants, program support and incentives to encourage on-the-ground conservation practices.

Proceeds help us raise awareness about natural resources concerns through youth and teacher education and community outreach.

Native Plant Sale profits let us work with student interns and offer scholarships to Benton County residents who study natural resources.

Your order supports our mission (page 8) and gives back to Benton County!
THANK YOU!



2011 NATIVE PLANT DESCRIPTIONS - continued

Special Conditions		Special Uses			
A	Prefers full sun	1	Attracts insects, bees, and butterflies	3	Wildlife, forage, cover and food
B	Can tolerate sun or some shade	2a	Birds	4	Bank stabilization
C	Prefers shade	2b	Hummingbirds	5	Ornamental
Plant Name	Mature Height	Sun	Soil Conditions	Special Uses	Comments
FLOWERS / GRASSES / GROUNDCOVER					
Selfheal <i>Prunella vulgaris ssp. lanceolata</i>	4 – 20"	A-B	Moist - dry	1, 5	Erect stems with opposite leaves, purple flowers May – Sept. attract pollinators.
Douglas Aster <i>Aster subspicatus</i>	2'	A	Moderate moisture	1, 5	Grows in meadows, forest clearings, salt and fresh water wetlands. Purple flower late summer
Fringe Cup <i>Tellima grandiflora</i>	20"	A, B	Moist		Greenish-white to sometimes reddish flowers, very fragrant.
Goats Beard <i>Arunceus dioicus</i>	3-6'	A-B	Moist to dry	1, 5	Tiny white spiked flowers.
Great Camas <i>Camassia leichtlinii</i>	2 - 4'	A-B	Heavy soil, meadows	5	Star-like slender-petal blossoms of creamy white or blue on tall spikes in spring. <i>C. leichtlinii</i> does better in wet microsites but is often found with <i>C. quamash</i> (prefers drier sites) in wet prairies.
Meadow Checkermallow <i>Sidalcea campestris</i>	18"–78"	A-B	Moist	1,5	Showy perennial with tall spikes of white to pale pink flowers.
Milkweed <i>Asclepias speciosa</i>	2 - 3'	A	Moderate moisture	1, 5	Beautiful scent, 2-tiered flower with pink petals in summer. Essential host for Monarch butterfly.
Oregon Iris <i>Iris tenax</i>	1 - 2'	A	Dry meadows, pastures	5	Low growing with grass-like blades. Showy dark blue flower. Natives used leaves for rope-making.
Oregon Sunshine <i>Eriophyllum lanatum</i>	10 – 24"	A	Dry	1, 5	Perennial wooly gray foliage with yellow flowers. Dry open habitat. Host plant for Painted Lady Butterfly.
Red Columbine <i>Aquilegia formosa</i>	12-18"	A	Moist meadows, streams	1, 2b, 5	Fern-like foliage, delicate red flowers.
Roemer's Fescue <i>Festuca roemeri</i>	10 - 35"	B	Moderately dry, well drained soil	3	Use in upland restoration, cut slope erosion control, open rocky meadows, and sloping transitional zones associated with dry prairies. Drought tolerant and good ground cover.
Slender Cinquefoil <i>Potentilla gracillis</i>	15 - 30"	A	Wet grassland, open woods	5	Prefers sandy well-drained soil. Yellow flowers. Runners.
Streambank Lupine <i>Lupine rivularis</i>	18"–42"	A	Moist, sandy or gravelly	1,5	Showy spikes of usually two-tone flowers of pale blue to deep purple. Helps fix nitrogen in soil, but can also be toxic to livestock.
Tiger Lily <i>Lilium columbianum</i>	2 - 4'	A, B, C	Moist, well-drained	5	Meadows, thickets, open forests and clearings. Flowers May to August. Orange flowers with purple spots.
Tufted Hair Grass (Kalapuya) <i>Deschampsia caespitosa</i>	3 - 5'	A-B	Throughout Willamette Valley	3, 4, 5	Good drought tolerance. Excellent tolerance of very wet winter conditions. Attractive as ornamental. Can spread via roots as well as seedlings.
Western Buttercup <i>Ranunculus occidentalis</i>	6-24"	A-B	Moist to dry	1	Great companion plant with Camas. Bright yellow flowers.
Western Geranium <i>Geranium oregonum</i>	10–30"	A-B	Moist	1,5	Fairly showy perennial in meadows and forest openings. Reddish-purple flowers.
Wild Ginger <i>Asarum caudatum</i>	2-4"	B-C	Moist	5	Beautiful ground cover in shaded areas. White aromatic flowers
Wood Strawberry <i>Fragaria vesca</i>	2 - 8"	B	Woodland groundcover	3, 5	Deciduous groundcover. White to pink flowers in spring and early summer. Edible fruit.
Yarrow <i>Achillea millefolium</i>	0.5 - 2'	A-B	Low water, poor soil	1, 5	Flat topped white flower on fern-like aromatic leaves. Good dried flower. Attracts beneficial bugs.
Yellow Monkeyflower <i>Mimulus guttatus</i>	2'	A-B	Watersheds, mountain streams	2b, 5	Large yellow flowers in late fall. Not drought tolerant.

Additional items available at order pick-up:

Plantskydd - Deer Repellent	Environmentally safe, made in USA, 100% natural, listed by Organic Materials Review Institute (OMRI). Works by emitting an odor that animals associate with predator activity. For more information call Alice Fairfield 541-766-8083.
Plant protectors and stakes	Protect tender seedlings from wildlife grazing with these plastic mesh tubes. Bamboo stakes included.

For photos of all the native plants we offer, visit our website at <http://www.bentonswcd.org/projects/treesale/>



Postage

456 SW Monroe Avenue, Suite 110 (door on 5th Street)
Corvallis, OR 97333
Phone: (541) 753-7208
E-mail: office@bentonswcd.org
Web: www.bentonswcd.org
Please note: new mailing address and location

Help us save valuable resources two ways...

1. Switch from snail mail to email by sending an email to tmatteson@bentonswcd.org with e-news in the subject line.
2. If you don't want to be on this mailing list, call us at (541) 753-7208 and we will remove you.

Please recycle this newsletter or better yet, pass it to a friend!



Two ways to support the use of native plants...

1. Give Native Plant Sale Gift Certificates
~ gifts that celebrate nature for years to come!

2. Join us as a Native Plant Sale VOLUNTEER
Feb 5 will be a fun community event!

THE BENTON SWCD MISSION
is to provide leadership to Benton County residents through education and technical assistance for conservation and responsible use and management of soil, water and related resources.

2011 Volunteer schedule and tasks

Starting in December
Solicit food donations

Thursday, Feb 3 & Friday, Feb 4
• Plant pick-up from nurseries
• Sale site preparation

Saturday, Feb 5 Plant Pick-up Day
• Lead volunteer - all day
• Plant station volunteer - shift
• Customer assistance - shift
• Food station management - shift
• Parking crew - shifts

Sunday, Feb 6
• Overstock sale
• Large order pick-up



Need more information call the Benton SWCD office at 753-7208 or email tmatteson@bentonswcd.org

BOARD OF DIRECTORS

DIRECTORS (ZONE)
Cliff Hall, Treasurer (1)
Anne Rigor, Vice Chair (2)
Tom Bedell, Chair (3)
Bobby Bewley (4)
Frank Nusbaum (5)
Jeni Richardson (At Large)
Henry Storch (At Large)

ASSOCIATE DIRECTORS
Rana Foster
Mark Taratoot
Tim Dehne

EMPLOYEES

Jennifer Floro, Office Manager
Jennifer Ayotte, District Manager
Donna Schmitz, Resource Conservationist
Taber Burton, Fish Passage Program Coordinator
Heath Keirstead, Education and Outreach Coordinator
Alice Fairfield, Native Tree and Shrub Sale Coordinator
Teresa Matteson, Education and Outreach Director & Horizons Editor

The Benton SWCD is an equal opportunity employer, providing services to the public without regard to race, color, national origin, gender, religion, age, disability, political beliefs, sexual orientation, and marital or family status.