

BENTON
SOIL AND WATER



CONSERVATION
DISTRICT

Horizons

Winter 2015-16

SERVING BENTON COUNTY SINCE 1956

2016 Native Plant Sale

Inside This Issue

Pollinator Garden	2
Order Form	3-4
Plant Descriptions	5-6
Changes	7
Volunteers Needed	8

Important Dates

NOVEMBER

11/8 Salmon Watch
Fundraiser at Laughing
Planet

DECEMBER

12/1 Pollinators in Decline
Lecture

12/31 Paper Order
Deadline

JANUARY

1/5 Native Plants for
Pollinators Lecture

1/31 Electronic Order
Deadline

FEBRUARY

2/20 NPS Order Pick-Up
from 8am-1pm

2/20 Native Plant
Market from 8am-4pm

2/20 OSU Small Farms
Conference

Connect With Us

 Facebook

 LinkedIn

 BentonSWCD.org



You Spoke. We Listened!

BSWCD surveyed volunteers, customers, nurseries and our staff and directors to understand how we can improve our grandest annual outreach event-the Native Plant Sale (NPS). Based on your responses, the NPS will be improved as described below.

New Pick-Up Location – Benton County Fairgrounds Livestock Building.

Plant Pick-Up 2/20 from 8 am to 1 pm – We no longer have assigned pick up times. You may pick up your order ANY TIME between 8 am -1 pm on Saturday, February 20.

Books and Seeds – This year we've added a seed option for some plants and a couple of great seed blends. We've also added some of our favorite native plant books. Some are on the order form, more will be available at the sale.

Stock Options – confidently invest in the future of pollinators. See the new stock option column on the order form for information about the plant forms offered.

A Focus on Pollinators – the 2016 plant list is shorter and focuses on pollinator plants. Watch for landscape designs, lectures, blog posts, and tours that support the pollinator theme.

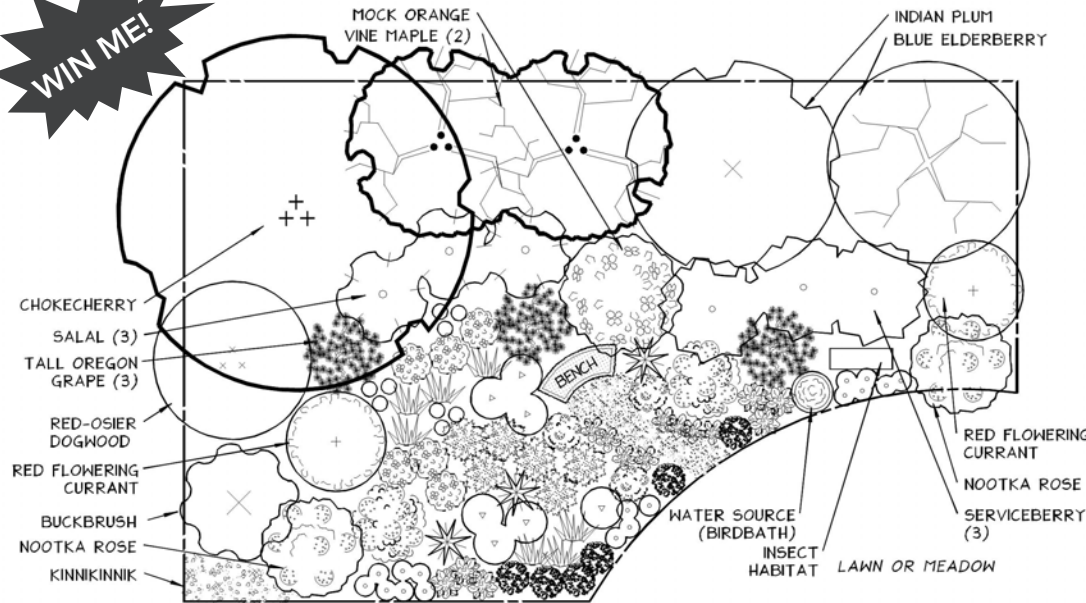
Raffle! – Landscape designer Signe Danler has created a gorgeous pollinator garden design for us (see page 2). You can **WIN** all of the plants needed to create the garden - a \$201 value - by purchasing a \$5 raffle ticket! Or go ahead and purchase them - we've included a shopping list to make it easy.

Native Plant Market 2/20 from 8 am to 4 pm – All day we will offer supplies, books, seeds, and special plants not available for pre-order. Any overstock plants will be available for purchase starting at 2 pm. PLEASE NOTE: Market is same day as Plant Pick-Up!

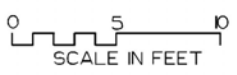
Payment Made Easier – Now we can accept debit and credit cards in addition to cash and check for day-of-sale purchases.



A Garden Plan for Pollinators



- KEY TO PERENNIALS**
- CAMAS
 - COMMON SELF-HEAL
 - DOUGLAS ASTER
 - GUMWEED
 - OREGON IRIS
 - OREGON SUNSHINE
 - RED COLUMBINE
 - ROSE CHECKERMALLOW
 - SHOOTING STAR
 - SHOWY or NARROW-LEAVED MILKWEED
 - TIGER LILY
 - WOOD STRAWBERRY



SUNNY POLLINATOR GARDEN ADJACENT TO LAWN OR MEADOW
 SIZE: 40' X 25'
 DESIGNED BY SIGNE DANLER, SURROUNDS LANDSCAPE DESIGN
 OCTOBER 2015



About the Garden

Designed for a typical suburban backyard, this 25 by 40 foot pollinator garden features showy native Willamette Valley plants. It should have a sunny southern exposure. Spread out the design and plant larger groupings to fill a bigger space.

Inclusion of trees, shrubs, and perennials provides a variety of heights. Low-growing self-heal, wood strawberry, and kinnikinnik along the edge soften the transition to an adjacent lawn.

Earliest spring blooms are provided by kinnikinnik, camas, shooting star, Oregon grape, Indian plum, and red-flowering currant, continuing with tiger lilies, milkweed, Douglas aster, and gumweed in the late summer and fall.

A short path leads to a bench beside the mock orange, so you can enjoy the fragrance while immersing yourself in the buzz of busy pollinators.

Basic Pollinator Needs

- Food** - appropriate leaves for caterpillars, nectar, pollen
- Water** - birdbath, small pond
- Shelter** - leaves, bark, thickets
- Nest sites** - insect hotel, bare soil

The Pollinators

- Bees** - Introduced honey bees and native bumble bees, mason bees, sweat bees, carpenter bees and others perform pollinator services.
- Beetles** - These messy pollinators usually like strong-scented, bowl-shaped flowers.
- Butterflies** - The star visitor in a pollinator garden, these winged beauties are attracted to showy blooms.
- Flies** - Tend to pollinate small flowers, growing in shade or moist soils.
- Hummingbirds** - Rufous and Anna's are the most common in our area, and prefer red, orange and pink tubular flowers.
- Moths** - Active at night. Drawn to sweet smelling, pale colored flowers.



Shopping List

- Broadleaf Trees**
 - Choke Cherry x1
 - Vine Maple x2
- Large Shrubs**
 - Blue Elderberry x1
 - Buckbrush x1
 - Indian Plum x1
 - Mock Orange x1
 - Red-osier Dogwood x1
 - Serviceberry, Pacific x3
- Small Shrubs**
 - Nootka Rose x2
 - Red Flowering Currant x2
 - Tall Oregon Grape x3
- Groundcovers**
 - Kinnikinnik x3
 - Salal x3
 - Wood Strawberry x17
- Flowers**
 - Broad-leaved Shooting Star x8
 - Common Camas x3
 - Common Self-heal x6
 - Douglas Aster x3
 - Oregon Iris x4
 - Oregon Sunshine x6
 - Red Columbine x7
 - Rose Checkermallow x6
 - Showy Milkweed x3
 - Narrow-leaved Milkweed x3
 - Tiger Lily x9
 - Willamette Valley Gumweed x3

BENTON
SOIL AND WATER



CONSERVATION
DISTRICT

Name		
Address		
City	State	Zip
Phone	Email	
How did you hear about the Sale? BSWCD Newsletter Capital Press The Thymes OSU Extension		
Circle all that apply. Facebook Flyer Gazette-Times BSWCD Email Other _____		



DEADLINES: Paper orders must be received with payment by December 31, 2015.
Electronic order deadline is January 31, 2016.

PICKUP DAY: **PICK UP ORDERS on SATURDAY, FEBRUARY 20, 2016 any time from 8:00 am to 1:00 pm.**

NEW LOCATION: Benton County Fairgrounds Livestock Building. Arrive at your earliest convenience.

DISCOUNTS: 10% discount on orders of more than 99 of any one species.
35% discount for educators/educational gardens. Contact Benton SWCD.
Orders over \$75 receive Native Plants for Willamette Valley Yards booklet **for free!**

Quantity	Common Name	Scientific Name	Stock Option	Price (\$)	Total
CONIFER TREES					
	Douglas-fir	<i>Pseudotsuga menziesii</i>	bare root	1.00	\$
	Grand Fir	<i>Abies grandis</i>	bare root	1.00	\$
	Willamette Ponderosa Pine	<i>Pinus ponderosa</i>	bare root	1.25	\$
BROADLEAF TREES					
	Big Leaf Maple	<i>Acer macrophyllum</i>	bare root	1.50	\$
	Choke Cherry	<i>Prunus virginiana</i>	bare root	1.50	\$
	Oregon White Oak	<i>Quercus garryana</i>	bare root	2.75	\$
	Pacific Dogwood	<i>Cornus nuttalli</i>	sm. container	4.25	\$
	Vine Maple	<i>Acer circinatum</i>	bare root	2.00	\$
LARGE SHRUBS					
	Coyote Bush	<i>Baccharis pilularis</i>	sm. container	3.25	\$
	Elderberry, Blue	<i>Sambucus caerulea</i>	bare root	1.50	\$
	Indian Plum	<i>Oemleria cerasiformis</i>	bare root	1.75	\$
	Mock Orange	<i>Philadelphus lewisii</i>	bare root	1.25	\$
	Narrow-leaved Buckbrush	<i>Ceanothus cuneatus</i>	sm. container	3.25	\$
	Ocean Spray	<i>Holodiscus discolor</i>	bare root	1.25	\$
	Pacific Ninebark	<i>Physocarpus capitatus</i>	bare root	1.50	\$
	Red-osier Dogwood	<i>Cornus sericea</i>	bare root	1.25	\$
	Serviceberry, Pacific	<i>Amelanchier alnifolia</i>	bare root	2.00	\$
SMALL SHRUBS					
	Clustered Rose	<i>Rosa pisocarpa</i>	bare root	1.00	\$
	Douglas Spirea	<i>Spiraea douglasii</i>	bare root	1.25	\$
	Evergreen Huckleberry	<i>Vaccinium ovatum</i>	sm. container	3.75	\$
	Nootka Rose	<i>Rosa nutkana</i>	bare root	1.75	\$
	Red Flowering Currant	<i>Ribes sanguineum</i>	bare root	1.00	\$
	Snowberry	<i>Symphoricarpos albus</i>	bare root	1.50	\$
	Tall Oregon Grape	<i>Mahonia aquifolium</i>	bare root	1.50	\$
GRASSES AND GROUNDCOVERS					
	Kinnikinnik	<i>Arctostaphylos uva-ursi</i>	sm. container	3.25	\$
	Rush- Sedge- Grass Blend (1 oz. covers 10 ft²)	See Description on page 5.	seed (by oz.)	2.00	\$
			seed (by lb.)	25.00	\$
	Salal	<i>Gaultheria shallon</i>	sm. container	1.00	\$
	Wood Strawberry	<i>Fragaria vesca</i>	bare root	0.75	\$
SUBTOTAL (this page)					\$

Quantity	Common Name	Scientific Name	Stock Option	Price	Total
FLOWERS					
	Broad Leaved Shooting Star	<i>Dodecatheon hendersonii</i>	sm. container	2.75	\$
	Checkermallow, Rose	<i>Sidalcea virgata</i>	sm. container	3.00	\$
	Common Selfheal (1 tsp. covers 15 ft ²)	<i>Prunella vulgaris</i>	seed (by tsp.)	1.00	\$
	Douglas Aster	<i>Aster subspicatus</i>	sm. container	3.25	\$
	Great Camas (1 TBS covers 10 ft ²)	<i>Camassia leichtlinii</i>	bulb	1.75	\$
			seed (by TBS.)	5.00	\$
	Large-leaved Lupine	<i>Lupinus polyphyllus</i>	sm. container	3.00	\$
	Milkweed, Showy (1 tsp. covers 50 ft ²)	<i>Asclepias speciosa</i>	sm. container	3.50	\$
			seed (by tsp.)	5.00	\$
	Milkweed, Narrow-leaved	<i>Asclepias fascicularis</i>	sm. container	3.75	\$
	Oregon Iris	<i>Iris tenax</i>	sm. container	4.00	\$
	Oregon Sunshine (1 tsp. covers 20 ft ²)	<i>Eriophyllum lanatum</i>	sm. container	3.25	\$
			seed (by tsp.)	1.00	\$
	Pollinator Blend (1 oz. covers 10 ft ²)	See Description on page 6.	seed (by oz.)	2.00	\$
			seed (by lb.)	25.00	\$
	Popcorn Flower (1 tsp covers 20 ft ²)	<i>Plagiobothrys figuratus</i>	seed (by tsp.)	1.00	\$
	Red Columbine	<i>Aquilegia formosa</i>	sm. container	1.50	\$
	Tiger Lily	<i>Lilium columbianum</i>	bulb	1.75	\$
	Willamette Valley Gumweed (1 tsp. covers 30 ft ²)	<i>Grindelia integrifolia</i>	seed (by tsp.)	1.00	\$
MISCELLANEOUS SUPPLIES					
	Plantskydd	<i>Liquid deer repellent</i>	1 quart	21.95	\$
			1.3 gallon	59.95	\$
	Mesh Tree Protector			0.75	\$
	Bamboo Stake			0.25	\$
	Raffle Ticket for Pollinator Garden Plant List	Valued at \$201!	1 ticket	5.00	\$
NEW FEATURE: BOOKS (Descriptions on page 6.)					
Quantity	Title	Author	# Pages	Price	Total
	Attracting Native Pollinators	Xerces Society	380	25.00	\$
	Farming with Native Beneficial Insects	Xerces Society	272	22.00	\$
	Native Plants for Willamette Valley Yards	Metro	54	1.00	\$
	Plants of the Pacific Northwest Coast	Pojar & Mackinnon	528	24.95	\$
	The Naturescaping Workbook	Beth Young	228	24.95	\$
	Trees to Know in Oregon	Edward C. Jensen	156	18.00	\$
SUBTOTAL from this side					\$
SUBTOTAL from other side					\$
ORDER TOTAL					\$
If your order total is over \$75, check box at right to receive free Native Plants for Willamette Valley Yards booklet.					<input type="checkbox"/>

Three Ways to Place an Order

1) By 12/31/15:

Deliver order form with payment to Benton SWCD at 456 SW Monroe Ave Suite 110, Corvallis, OR 97333

2) By 1/31/16:

Order online at www.bentonswcd.org/programs/plant-sale/

3) Contact us at 541-753-7208 or office@bentonswcd.org for ordering assistance.

Special Conditions			Special Uses		
A Prefers full sun B Can tolerate sun or some shade; partial shade C Prefers shade			1 Attracts insects, bees and butterflies 2a Birds 2b Hummingbirds 3 Wildlife forage, cover and food 4 Bank stabilization 5 Ornamental		
Name	Mature Height	Sun	Soil Conditions	Special Uses	Description
CONIFER TREES					
Douglas-fir <i>Pseudotsuga menziesii</i>	200'+	A	Grows on all but wet soil	Timber, 1, 2a	Oregon State tree. Can live over 1000 years. Thick bark enables it to survive moderate fire. Great Christmas tree.
Grand Fir <i>Abies grandis</i>	250'	B, C	Moist soil	Timber, Xmas Tree	Tall conifer which is shade tolerant and suited to inter-planting in existing under-stocked forests.
Willamette Ponderosa Pine <i>Pinus ponderosa</i>	180'	A	Grows on wet and dry sites	Timber, 3	Native pine to Willamette Valley. Also known as Yellow Pine. Popular for its straight growth habit which exposes scaled colored bark with vanilla fragrance.
BROADLEAF TREES					
Big Leaf Maple <i>Acer macrophyllum</i>	100'	A, B	Moist to well drained soil	1, 3	Hardy and majestic. Great shade tree. Attractive fall color.
Choke Cherry <i>Prunus virginiana</i>	8 - 15'	A, B	Wet to dry	2a, 3	White flowers in late spring. Needs full sun to produce sour red - black cherries much loved by wild animals & birds. CAUTION - leaves are extremely toxic to grazing animals!
Oregon White Oak <i>Quercus garryana</i>	100'	A	Well drained soil	Timber, 1, 2a, 2b	Oregon's hallmark native oak. Forms wide spreading branches and grows to 100 feet. Important wildlife species.
Pacific Dogwood <i>Cornus nuttalli</i>	30 - 40'	B, C	Moist, well drained, acid	1, 2, 3, 5	Attractive multi-branched tree with white flowers in spring, may re-bloom early fall followed by clusters of bright red berries.
Vine Maple <i>Acer circinatum</i>	25'	A, B, C	Moist soil	1, 2a, 2b, 3, 5	Attractive fall color. Suitable for shade ornamental or forest understory plant.
LARGE SHRUBS					
Coyote Bush <i>Baccharis pilularis</i>	6 - 10'	A	Moist to well drained soil	1, 2a, 2b, 3, 5	With its late bloom, it is an indispensable source of autumn nectar for hundreds of insects. Prune periodically to maintain shape.
Elderberry, Blue <i>Sambucus caerulea</i>	12'	A, B, C	Prefers well drained soils	1, 2a, 2b	Fast growing handsome shrub. Excellent food and cover species. White flower clusters, edible berries.
Indian Plum <i>Oemleria cerasiformis</i>	16'	A, B, C	Dry to moist soil	1, 2a, 2b	Early spring bloom (Feb/Mar). White flowers yield small purple plums. Highly sought by birds.
Mock Orange <i>Philadelphus lewisii</i>	12'	A, B	All but wet soil.	1, 2a, 2b	Clusters of aromatic white flowers at branch ends. Attracts bees and butterflies. Plant at low elevation.
Narrow-leaved Buckbrush <i>Ceanothus cuneatus</i>	3 - 11'	A	Poor, rocky, dry, well-drained soils	1, 2a, 2b, 3,	Evergreen N-fixing shrub with thorny rigid branches and small spoon shaped leaves. Small white to purple fragrant flowers grow in dense round clusters that brighten the entire plant.
Ocean Spray <i>Holodiscus discolor</i>	10'	B, C	Dry to moist soils	1, 2a	Multi-stemmed shrub with creamy white flowers. Used for riparian restoration and wildlife habitat.
Pacific Ninebark <i>Physocarpus capitatus</i>	12'	A, B, C	Moist soils along wetlands	2a, 3	Large spreading, attractive shrub with round clusters of white flowers. Maple-like leaves, shreddy bark.
Red-osier Dogwood <i>Cornus sericea</i>	20'	A, C	Moist soils along wetlands	1, 2a, 2b, 3, 4, 5	Attractive red stems with white flower clusters that produce white berries. Fast growing. Used in riparian reclamation.
Serviceberry, Pacific <i>Amelanchier alnifolia</i>	10 - 25'	A, B	Dry to moist soils	1, 2a, 3	Attractive foliage and white flowers. This is an important wildlife species. Attracts cedar waxwings.
SMALL SHRUBS					
Clustered Rose <i>Rosa pisocarpa</i>	3 - 5'	A	Moist sites	1, 2a, 3	Pale pink rose with sweet fragrance. Can be grown on a variety of sites with sunlight.
Douglas Spirea <i>Spiraea douglasii</i>	3 - 6'	A, B	Prefers moist soils	1, 5	Fast growing shrub forming beautiful pinkish spires in bloom (July). Attractive ornamental.
Evergreen Huckleberry <i>Vaccinium ovatum</i>	4 - 6**	B, C	Moist, well-drained, acidic	2a, 3, 5	Attractive plant with shiny dark green foliage, pink bell flowers, and edible fruit. *Can reach 12' in coastal habitat.
Nootka Rose <i>Rosa nutkana</i>	5 - 7'	A	Adaptable to most soils	1, 3	A common roadside species in the valley. Nootka rose has attractive pink blossoms (2" across) in summer.
Red Flowering Currant <i>Ribes sanguineum</i>	4 - 8'	A, B	Best on well drained soils	1, 2a, 2b, 5	Beautiful ornamental shrub with flowers that may be white to deep red, blue berries. Attracts butterflies and hummingbirds.

Special Conditions			Special Uses		
A Prefers full sun B Can tolerate sun or some shade; partial shade C Prefers shade			1 Attracts insects, bees and butterflies 2a Birds 2b Hummingbirds	3 Wildlife forage, cover and food 4 Bank stabilization 5 Ornamental	
Name	Height	Sun	Soil	Special Uses	Description
SMALL SHRUBS <i>continued</i>					
Snowberry <i>Symphoricarpos albus</i>	2 - 6'	A, B, C	Grows on dry to moist sites	1, 2a, 2b	Adaptable shrubs having attractive foliage and clusters of waxy white berries that persist through winter.
Tall Oregon Grape <i>Mahonia aquifolium</i>	4 - 6'	A, B, C	Dry to fairly moist	1, 2a, 2b, 3, 5	State flower of Oregon. Holly-like leaves and dark blue edible berries.
GRASSES / GROUNDCOVERS					
Kinnikinnik <i>Arctostaphylos uva-ursi</i>	6 - 12"	A	Well drained	1, 5	Evergreen shrub with reddish bark and light green, hairy leaves. A wonderful landscape shrub for dry areas.
Rush- Sedge- Grass Blend	12 - 60"	A	Moist to wet soil	1, 2, 3, 4	Tufted hairgrass, water foxtail, spike rush, slough grass, slough sedge, and others...see website for full list.
Salal <i>Gaultheria shallon</i>	2 - 3'	B	Dry to moist	1, 3, 5	Dense low groundcover for areas where tall shrubs and weeds not desired! Foliage used in floral arrangements. Edible berries.
Wood Strawberry <i>Fragaria vesca</i>	2 - 8"	B	Woodland groundcover	3, 5	Deciduous groundcover. White to pink flowers in spring and early summer. Edible fruit.
FLOWERS					
Broad Leaved Shooting Star <i>Dodecatheon hendersonii</i>	5 - 16"	A, B	Well drained soil and dry summer	1, 5	Showy flower with color range in color from magenta to deep lavender to white. Bloom Feb - May.
Checkermallow, Rose <i>Sidalcea virgata</i>	8 - 40"	A	Moist to dry	1, 5	Pink to magenta five-petaled flowers bloom on tall open wands from late spring to mid-summer and resemble delicate hollyhocks.
Common Selfheal <i>Prunella vulgaris</i>	4 - 20"	A, B	Moist to dry	1, 5	Erect stems with opposite leaves, purple flowers May to September attract pollinators.
Douglas Aster <i>Aster subspicatus</i>	2'	A	Moderate moisture	1, 5	Grows in meadows, forest clearings, salt and fresh water wetlands. Purple flower late summer.
Great Camas <i>Camassia leichtlinii</i>	2 - 4'	A, B	Heavy soil, meadows	1, 5	Star-like slender-petal blossoms of creamy white or blue on tall spikes in spring.
Large-leaved Lupine <i>Lupinus polyphyllus</i>	1 - 5'	A, B, C	Prefers wet to moist soil	1, 2b, 4, 5	Large palmate leaves and showy white-pink to purple-blue flowers on stalks. Blooms May - August.
Milkweed, Showy <i>Asclepias speciosa</i>	2 - 3'	A	Moderate moisture	1, 2b, 5	Beautiful scent, rosy-pink starburst flowers in spherical clusters in summer. Silvery foliage. Nectar source for monarch butterflies.
Milkweed, Narrow-leaved <i>Asclepias fascicularis</i>	2 - 4'	A	Well-drained moist to dry	1	Beautifully intricate dusky-rose flowers in crown-like umbels. This is the larval host plant for monarch butterflies.
Oregon Iris <i>Iris tenax</i>	1 - 2'	A	Dry meadows, pastures	5	Low growing with grass-like blades. Showy dark blue flower.
Oregon Sunshine <i>Eriophyllum lanatum</i>	10 - 24"	A	Dry	1, 5	Perennial with woolly gray foliage and yellow flowers. Dry open habitat. Host plant for Painted Lady Butterfly.
Pollinator Blend	2" - 6'	A	Moist soil	1, 2a, 3	Self-heal, Oregon sunshine, Cinquefoil, meadow checkermallow, spike primrose, popcorn flower...see website for full list.
Popcorn Flower <i>Plagiobothrys figuratus</i>	6 - 15"	A, B	Moist to wet soil	1	Small, fragrant white flowers with yellow centers along narrow coiled spikes. Blooms in early spring.
Red Columbine <i>Aquilegia formosa</i>	12 - 18"	A	Moist meadows, streamsides	1, 2b, 5	Fern-like foliage, delicate red flowers.
Tiger Lily <i>Lilium columbianum</i>	2 - 4'	A, B, C	Moist to well-drained soil	1, 5	Characteristic lily flowers are orange with purple spots (from May-Aug.). Grows in meadows, thickets, open forests, and clearings.
Will. Valley Gumweed <i>Grindelia integrifolia</i>	8 - 40"	A, B	Moist soil	1, 2a	Perennial herbaceous plant with yellow ray and disc flowers (from June - Nov.). Important late-season pollen source.
BOOKS					
Title	Author	# pgs.	Description		
Attracting Native Pollinators	Xerces Society	380	With color photos and illustrations, covers Pollinators and Pollination, Taking Action, Bees of North America, and Creating a Pollinator-Friendly Landscape.		
Farming with Native Beneficial Insects	Xerces Society	272	Describes how to recognize beneficial insects and their habitats, and how to evaluate, design, and improve habitat for them.		
Native Plants for Willamette Valley Yards	Metro	54	Booklet includes 140 plants; offers detailed information on sun and moisture requirements, wildlife benefits and native range within NW OR and SW WA.		
Plants of the Pacific Northwest Coast	Pojar & Mackinnon	528	This best-selling, classic field guide is the most trusted authority on plants of the Pacific Northwest. Features 794 species.		
The Naturescaping Workbook	Beth Young	228	Easy-to-follow, do-it-yourself plan for all skill levels. Teaches gardeners to understand and nurture the native eco-systems that exist in their yard.		
Trees to Know in Oregon	Ed Jensen	156	A full-color field guide to tree identification in Oregon.		

Pollinator & Riparian Support



Popcorn Flower

Buzz if You Love Pollinators!!

We have adopted a pollinator theme to span the 2016 and 2017 Native Plant Sales. For the next two years the plant lists will focus on varieties that sustain these hard-working insects and birds.

The NPS inventory will help growers provide successional blooms, secure structure, and nectar resources throughout the active pollinator seasons.

In addition to the pollinator plants, we continue to offer historically best-selling plant species.

We will round out the Pollinator Theme with a year of pollinator-focused outreach events and materials. Check our calendar and blog for updates.

Riparian Project Assistance

Do you own property adjacent to a Benton County stream? If so, you may qualify for financial assistance to plant trees and shrubs along the stream and/or build a fence to keep domestic animals out of the water.

If you order riparian trees and shrubs from our Native Plant Sale we will pay for 50% of the cost up to \$200 for an order of \$400 or more.

For qualification criteria, call Donna Schmitz at 541-753-7208. As the BSWCD Resource Conservationist, Donna provides **free site visits** to assist Benton County citizens with the selection of native plants that are appropriate for upland, wetland, forest, woodland and riparian sites.

Get Inspired! Get Informed! Pollinator Lectures

Do Bees Really Need Our Support? The Real Story of Pollinators in Decline
 Andrew Moldenke, OSU Professor, Botany & Plant Pathology, & Henry Storch, Beekeeper
 Tuesday, December 1, 2015, 6:30-8 PM

Bee Friendly: Native Plants for Pollinators by the Season
 Henry Storch, Beekeeper
 Tuesday, January 5, 2016, 6:30-8 PM

Venue: Corvallis-Benton County Public Library Meeting Room - 645 NW Monroe Avenue, Corvallis
These lectures are free and open to the public.



Checkermallow



Checkermallow & Oregon Sunshine



Self-heal



456 SW Monroe Avenue, Suite 110
 Corvallis OR 97333
 541-753-7208
 www.BentonSWCD.org



Native Plant Sale Volunteers ROCK!

The BSWCD Native Plant Sale is a community tradition thanks to help from more than 50 volunteers each year. Join us for a 3-hour shift to fill orders, help customers, and keep the operation moving smoothly as we process over 300 native plant orders.

No experience necessary!

Volunteer opportunities include:

Friday, Feb. 19, 2016

- Plant pick-up from nurseries
- Sale site preparation

Saturday, Feb 20 - Plant Pick-up Day

- Plant station volunteer - 3 hour shift

Join the fun! Contact Teresa at

tmatteson@bentonswcd.org or 541-753-7208

Note: Convenient New Location!

Benton County Fairgrounds Livestock Building

Board of Directors

Directors (Zone)

- Pat Malone (1)
- Marvin Gilmour (2)
- Cliff Hall, Chair (3)
- Grahm Trask (4)
- Heidi Goracke (5)
- Jerry Paul, Treasurer (At Large)
- Henry Storch, Vice-Chair (At Large)

Associate Directors

- Tim Dehne
- Rana Foster
- Mark Taratoot

Staff

Holly Crosson, Executive Director

Crystal Durbecq, River Restoration Coordinator

Heath Keirstead, Communications, Youth Education & Invasives Program Coordinator

Teresa Matteson, Soil Health Coordinator

Donna Schmitz, Resource Conservationist

Tom Snyder, NRCS District Conservationist

The Benton SWCD is an equal opportunity employer, providing services to the public without regard to race, color, national origin, gender, religion, age, disability, political beliefs, sexual orientation, and marital or family status.