



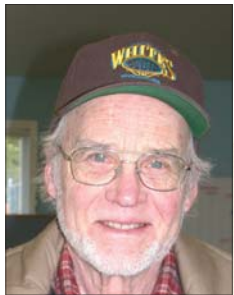
Fall 2008

Horizons

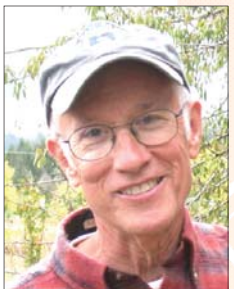
Volume 18 Issue 1

SERVING BENTON COUNTY OREGON SINCE 1956

2007-08 Annual Report VOLUNTEERS Many efforts - broader reach!



Seven elected volunteer Board members meet monthly to provide the vision and leadership that support Benton SWCD programs. They guide the organization, approve financial reports, oversee staff activities, approve Natural Resources Conservation Service and Technical Resource conservation plans, participate in strategic planning and vote on miscellaneous District business. Shown (with years of service in parentheses) starting upper left, our current Board of Directors include Tom Bedell (12), Joe Hinds (10), Cliff Hall (6) and Tim Dehne (3). On the right are Anne Rigor (5), Frank Nusbaum (2) and Nick Chambers (1).



Benton SWCD Associate Directors contribute their expertise to strengthen the scope of service and networking abilities of the District. Mark Taratoot and Rana Foster, pictured lower right, have both supported the Benton SWCD for more than 10 years. The District recruits and welcomes Associate Directors to join us at any time.

One hundred ninety-five folks contributed a total of 1,600 hours, *equivalent to more than a 3/4 time employee*, to the following Benton SWCD programs, activities and events:

- Benton Fish Passage Improvement Program
- Kids Day for Conservation
- Willamette Riverkeeper Monitoring
- Ag and Forest Expo
- 4H Wildlife Stewards Summit
- Urban Creek Restoration & Outreach Program
- daVinci Days
- Corvallis Outdoor School
- Composting in Avery Park
- Native Plant Sale
- SOLV Weed Pull



Up-coming volunteer opportunities

Through a strategic planning process the BSWCD Directors and staff have set goals and objectives to form future District services. In addition to the bulleted list above, we are seeking volunteers with skills and interest related to the following areas:

- invasive weed identification and management
- development of a soil quality program
- new and ongoing riparian restoration projects

We mobilize volunteers to work with our natural resource partners. For example, Oregon Department of Fish and Wildlife is recruiting volunteers to assist with projects to improve fish habitat and riparian areas on Dixon Creek. Want to remove culvert debris, plant trees or help students check a fish trap? Contact Karen Hans at 541-757-4186 x251 or email karen.m.hans@state.or.us.

INSIDE THIS ISSUE...

BSWCD Annual Report	2 - 7
Conservation Calendar	3
Educator Workshops	3
2009 Native Plant Sale underway	8

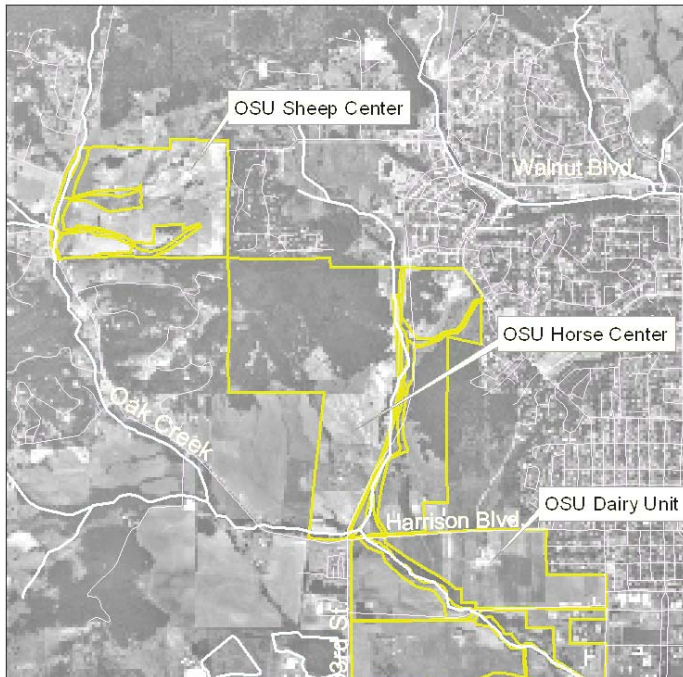
Technical Resource Program

Donna Schmitz, Resource Conservationist at BSWCD, provided one-on-one technical assistance and secured financial support for a variety of conservation projects in Benton County.

CREP: Benton SWCD developed plans supported by the Conservation Reserve Enhancement Program, which focuses on the restoration of riparian habitat and protection of surface water quality on agricultural lands. Participants receive rental payments and cost shares to create conservation buffers on marginal pasture and crop land for 10 or 15 year contracts.

Under this program Donna conducted eight site visits with agricultural landowners to determine their eligibility for the program. She developed three riparian restoration plans on 8.5 acres.

Donna also worked with the OSU Department of Animal Sciences in preparing the riparian areas along their Oak Creek agricultural management units for a large scale tree and shrub planting this winter (map below). This project will produce over seven miles of fencing to exclude animals from 143 acres of riparian areas, provide 10 off-stream watering facilities and include two livestock creek crossings. Archeological cultural resource surveys were conducted on OSU lands in Benton County.



CREP PARTNERS: Farm Services Agency, Natural Resource Conservation Service, Oregon Watershed Enhancement Board, Oregon Department of Forestry

LOOKING FORWARD: Several new landowners have signed up for the Conservation Reserve Enhancement Program funded through the new USDA Farm Bill. Included with the new signups is the OSU Beef Ranch on Soap and Berry Creeks in northern Benton County.

TECHNICAL ASSISTANCE: Instigated via telephone inquiries, site visits or office visits, over 180 residents were assisted to address their soil and water resource concerns, such as manure and mud issues, irrigation efficiency, noxious weed control, soils map requests, native plant recommendations, dam and culvert removals, pesticide collection events, hedgerow planting, stream restoration, wetland and riparian restoration, permits, fencing, water conservation, improving soil quality and development of grants to fund projects.

Technical Assistance Highlights	Contacts
Native Plant Recommendations	56
Riparian Restoration	33
Soils Maps	20
Noxious Weed Control	19
Agricultural Resource Concerns	12
Water Quality Issues	8
Manure/Mud Management	7
Soil erosion/quality	7
Wetland Restoration	6
Stream Restoration	5
Water Conservation/Availability	3
Dam/Culvert Removal	3
Upland Wildlife Restoration	2
Permits	2

LOOKING FORWARD: Strategic planning is underway to improve outreach and the District's ability to provide technical assistance to more Benton County residents.



Large woody debris placed in Maxfield Creek in Kings Valley.



The building of this composting structure near Finley Wildlife Refuge was inspired during the Horses & Mud workshop with OSU Extension Small Farms agent, Melissa Fery. Building materials were funded by an OWEB Small Grant. Proper manure management improves nutrient cycling and protects water quality.

- TR COMMUNITY COLLABORATION:** Donna collaborated with conservation partners to develop and implement the following projects:
- Benton County Habitat Conservation Plan
 - Marys and Luckiamute River Watershed Councils' fish passage committees
 - Benton County National Pollution Discharge Elimination Permit Education and Outreach efforts
 - Greenbelt Landtrust Noble Ranch grazing plan
 - Marys Peak and Alsea Stewardship Groups
 - Benton County Water Plan
 - Benton County Roadside Vegetation Management solutions
 - Conservation Partners Roundtable
 - Groundwater Management Area
 - Agricultural Water Quality Management Area Plan
 - OWEB small grant teams
 - Upper Willamette Coordinated Weed Management Area
 - Willamette Roundtable

TR PARTNERS: Oregon Department of Agriculture, Natural Resource Conservation Service, Farm Service Area, US Fish and Wildlife, US Forest Service, US Bureau of Land Management, Oregon Department of Environmental Quality, Oregon Association of Conservation Districts, Oregon Department of Forestry, Oregon Department of Fish and Wildlife, Benton County Public Works / Natural Areas / Parks and Development Departments, Institute for Applied Ecology, Greenbelt Land Trust, Benton County OSU Extension, Marys River and Luckiamute River Watershed Councils

Conservation Calendar for Fall 2008 and beyond...

Date & Time Location	Event/Speaker	For more information contact:
Saturday, November 8 9:00am to noon <i>Forest Dell Park in N. Corvallis access is from the roadside off Highland Drive at Highland Dell</i>	Volunteer opportunity - Trail Work Party! Join us for a fun-filled trail workday as we do some trail cribbing and maintenance. Tools and gloves will be provided. Volunteers just have to show up with appropriate dress and a water bottle.	Steve Lilly Greenbelt Land Trust or Steve McGettigan Corvallis Parks & Recreation (541) 754-1739 steve.mcgettigan@ci.corvallis.or.us
Saturday, December 6 8:30 AM - 4 PM <i>Bald Hill Park</i>	Volunteer opportunity! Trail Work Party activities will include trail regrading and cribbing. Corvallis Parks & Recreation will provide everything needed, volunteers just have to show up with appropriate dress and a water bottle.	Steve McGettigan Corvallis Parks & Recreation (541) 754-1739 steve.mcgettigan@ci.corvallis.or.us
Saturday, February 7, 2009 9 AM - 5 PM <i>Eichler Hay Company</i>	2009 Native Plant Sale Order deadline is January 23, 2009 Some plants have limited availability and will be sold on a first-order first-filled basis This is a fun-filled volunteer opportunity!	See the BSWCD web site for sale details and a downloadable order form. Call 541-753-7208 Email treesale@bentonswcd.org The order form and plant descriptions will be included in the Dec. Horizons!

Upcoming Educator Workshops in Benton County

Benton SWCD offers quality workshops for Benton County Educators. We have the honor of working with outstanding natural resources partners including Benton County OSU Extension 4H, Oregon Natural Resources Education Program and Corvallis Environmental Center. Check our website at www.bentonswcd.org for updates on educator workshops listed below, call 541-753-7208 or email tmatteson@bentonswcd.org. *Ask about the 4-H Wildlife Stewards Hybrid option for these workshops.*

Date & Time	Curriculum	Focus
Saturday, December 6, 2008 <i>Location TBA</i>	Energy and Society (PLT) preK-8 level	Investigate energy issues and roles in society
Saturday, March 7, 2009 <i>Location TBA</i>	Flying WILD (PLT) K-12 level	Celebrate birds - just in time for spring!

Education & Outreach

Making Ripples



Heath Keirstead and Teresa Matteson are the Benton SWCD's Making Ripples team. Both have driving passion for and creative dedication to natural resources conservation education. E&O enhances the District's efficacy by building strong community networks with professionals, businesses, agencies, volunteers, teachers and students. The team wields a strong preK-12 program that directly reached over 3,800 youth in FY08.

Recognized by the Oregon Association of Conservation Districts' as the
2007 Outstanding District Education Program

The Making Ripples Program impacted Benton County youth through direct contact, via educator workshops and by providing financial support for conservation activities in and out of the classroom. Listed below are the E&O youth education guiding objectives:

- Expand contact base to work with all schools in Benton County.
- Teach the youth of Benton County the importance of conserving soil and water.
- Teach the fundamentals of soil science and water quality to Benton County youth.
- Get kids excited about soil & water science and conservation practices.
- Train educators to teach soil science and watershed concepts to students.

Youth E&O Event	Contacts	Age/grade	Service area
Lincoln 4H WS Pirate Day	21	1 - 2 grades	Lincoln K-8 School
Corvallis Outdoor School	500	6th grade	Corvallis School District
Forest Camp	180	7th grade	Zion Lutheran, Alsea, Lebanon, Monroe, Scio
Spring Field Day	160	6th & 7th grade	Philomath & Corvallis
Forest Expo	800	3rd & 4th grade	Philomath & Corvallis
Kids Day for Conservation	1000	All ages	Benton County
Oregon Green Schools Summit	400	4th-12th grade	Oregon-statewide
Da Vinci Days	150	All ages	Mostly Benton County
CHS marine science & horticulture	75	9-12th grade	Corvallis High School
CHS Green Club meetings	12	9th-12th grade	Corvallis High School
4-H Wildlife Stewards Summit	200	K-8th grade	Benton County
Oregon Envirothon	181	9th-12th grade	Oregon-statewide
GPS class	12	4th-9th grade	Benton County
Science Fair Judge	14	6th grade	Kings Valley Charter School
Salmon Watch	107	high school	Corvallis High School
Jackson Street Youth Shelter	18	ages 10 - 17	JSYS serves Benton, Linn & Lincoln Counties

WEB SITE DEVELOPMENT & MANAGEMENT: Two consultants played key roles in increasing our outreach capacity by managing our web site www.bentonswcd.org. Joshua Hanson of Up Bear Enterprises and Andy Hoffmann are our techno-wizards.

In addition to technical support, Josh managed our web site domain, developed the Philomath Compost Project web page and created our Google Groups mailing lists which facilitated electronic announcements and e-newsletter subscriptions.

Andy maintained our web site with timely updates, quick postings and verified links.



Taylor Bortz

AmeriCorps LINKS intern



worked with CHS students, facilitated the SOLV Village Green Weed Pull and orchestrated the Dixon Creek Tour.

Taylor -
 thanks for all your hard work!!!

YOUTH E&O PARTNERS:

Dixon Creek LLC, CHS teacher Brian Wake and his two student teachers, his marine science and horticulture students, LeeAnn Mikkelson of Oregon Natural Resources Education Program, Maggie Livesay of OSU Extension 4-H, Diana Sharps of Corvallis Public Works, Karen Hans of Oregon Department of Fish & Wildlife Salmon & Trout Enhancement Program (STEP), Scott Wright of River Design Group, Dick Powell and Gary Springer of Starker Forests, Kim Carson of Oregon Trout. We extend a **special thanks** to the other volunteers who shared their expertise with the students as guest speakers and project mentors.

Education & Outreach ~ continued

The E&O team collaborated with BSWCD Technical Resource staff and outside partners to provide workshops, tours, courses, the annual Native Plant Sale and financial assistance to more than 840 Benton County adults.

Adult E&O activity	Contacts	Age/grade	Topic
OSU Soils for Teachers CSS599	13	Adults	hands-on soil activities for place-based learning
Compost Basics	10	Adults	backyard compost basics
Naturescaping	29	Adults	soil awareness and conservation
Rural Living Basics	39	Adults	Soils for landowners; financial assistance
Annual Meeting	49	Adults and youth	awards, Land Use and Water
OSU 4H Wildlife Stewards Hybrid Trainings	39	Adults and High School students	Project WILD Aquatic; Project WILD
Envirothon Teachers In-service	43	High school educators from around Oregon	soil concepts and hands-on activities
Native Plant Sale	296	Adults and youth	promote use of native plants
Small Farms Direct Marketing Conference	60	Adults	conservation opportunities for landowners
Horses & Mud Workshop	17	Adults - public	mud and manure management
Irrigation Water Management	16	Adults - public	irrigation systems, Web soil survey, water rights, fertilizer and irrigation interactions, GWMA, funding, projects
Agricultural Water Quality Management Area Plan presentation	25	Local Advisory Committee	technical accomplishments
Water Quality: Improving Your Stormwater	20	Adults - public	protecting rural stormwater quality
Village Green SOLV Weed Pull	19	Adults	riparian management
Urban Creek Tour	100	Adults and youth	8 sites on Dixon Creek
Miscellaneous Outreach	65	Adults	office requests; Farmers Market booth; Scout leaders
Electronic announcements	14,486	email recipients	various conservation announcements; jobs



NEW TEAM MEMBER

Meet Sarah Dyr Dahl, Conservation Technician, who recently joined the BSWCD team. Sarah grew up on her family's farm and the neighboring banks of the Applegate River in southern Oregon. After completing a B.S. in Biology and an internship at Oregon State University, Sarah and her family moved to Homer, Alaska where she worked for two years as a Biologist for a native tribe, followed by a two year stint as Restoration Projects Manager at the Coos Watershed Association on the central Oregon coast.

Sarah is passionate about restoring, preserving, and experiencing natural ecosystems; hunting wild mushrooms; hiking, and finding creative ways to get her daughter to enjoy these things with her.

ADULT E&O PARTNERS:

Benton County OSU Extension 4-H and Small Farms, Corvallis Public Works, Natural Resources Conservation Service, Benton County Public Works, Benton County Development Department, Oregon State University, Oregon Department of Agriculture, Oregon Water Resources Department, Oregon Department of Environmental Quality, OSU Institute for Water and Watersheds, Jody Einerson, Beth Young, Corvallis Environmental Center, Alsea, Luckiamute and Marys River Watershed Councils



Heath and Taylor prepare plots for the 4H Wildlife Stewards/Project Learning Tree Hybrid Training at Philomath Elementary School in December 07.

LOOKING FORWARD:

Sarah will provide technical assistance to landowners through recommendations for native plant use, maintaining and/or restoring fish and wildlife habitat and vegetation management techniques. She will also help implement future tours, workshops and presentations.

Benton Fish Passage Improvement Program

Started in 2001 with funding from the Oregon Watershed Enhancement Board, the Benton Fish Passage Improvement Program (BFPIP) is coordinated by Taber Burton. The program demonstrates a successful cooperative effort between Benton SWCD, Benton County Public Works and GIS Departments, and the local watershed councils: Marys, Alsea, and Luckiamute.



The perched Blair Creek culvert hindered fish passage prior to replacement.

The BFPIP involves compiling all available fish passage barrier and fish habitat inventory data for Benton County into one GIS database with the goal of identifying, prioritizing and planning fish passage and stream restoration projects.

The fish passage program obtains pertinent information from city, county, state and federal agencies, and private

landowners. This program is designed to benefit the survival of threatened and endangered steelhead trout, coho and Chinook salmon, as well as cutthroat trout living in Benton County watersheds. These species are important to communities, commerce, and the interest of the public.

The Benton Fish Passage Improvement Program is not affiliated with regulatory agencies nor does it enforce regulations; it is simply a way to inventory barriers and work with landowners to secure fish passage barrier removal funding and ultimately extend fish habitat.



Replaced and countersunk, the culvert now permits fish passage.

In 2005 the Program and its partners adopted the policy to assess whole 6th Field sub watersheds. This approach has provided a clearer picture of the entire Benton County watersheds system. Last season (summer 2007) the majority of BFPIP time was invested in a project with the Luckiamute Watershed Council, when 37 stream miles were walked and 64 locations where investigated for possible blockages. Survey data

was collected for 33 culverts, 3 dams, and 2 waterfalls. This season (summer 2008) the focus has been on the upper Luckiamute River and Beaver Creek in the Marys River Watershed with work concentrated on Starr Creek, Duffy Creek, and Henderson (Bryant) Creek.

EDUCATION: In spring 2008, Oregon Trout, Marys Watershed Council and Marys Peak Natural Resources Interpretive Center sponsored an event titled STEWARDSHIP Field Day. (Students and Teachers Engaged in Watershed and Resource Decisions using Sustainable, Hands-on Inquiry based Practices). Taber Burton, BFPIP coordinator, instructed students and teachers on fish passage issues and data collection in the Rock Creek area.

LOOKING FORWARD: This program has initiated many projects that have opened significant numbers of quality habitat stream miles. Future program growth will involve creating new partnerships while sustaining old connections. Improved education and outreach efforts will increase landowner and community knowledge of fish passage issues.

BFPIP PARTNERS

- OWEB—Financial support
- BLM—Financial support
- Benton County— In-kind support
- Volunteers—Time donated in field work
- Landowners—Program participation

Benton County Public Works has continued to provided the program with in-kind support such as office space, technical support, and use of county vehicles. Financial support came from two separate sources: the Oregon Watershed Enhancement Board and Bureau of Land Management.

The mainstay of this program is the team of field survey volunteers who have donated over 200 hours to the program.

Landowner participation plays a vital role in the success of this program. Landowners grant us access to their property to take the measurements needed for fish passage assessment.



BFPIP volunteers, Julie Skopal and Brycen Swart, survey Berry Creek.

Visit the updated BFPIP web page www.bentonswcd.org/fishpassage/index.html to see the project inventory map, 20 zone maps and a project map.

Is there a fish passage barrier near YOU?

District Management

Jenny Ayotte and Jen Floro manage BSWCD administration and business. A property tax base is the financial foundation that allowed us to leverage wages, skills and services to secure additional grants for \$178,000. The additional funds supported conservation programs and projects in Benton County.

Budget Summary

Receipts	\$ Amount
Beginning balance 07/01/2007	166,072
Benton County Property Taxes	287,906
Benton County contribution	5,000
Grants	176,847
Interest	9,441
Other	4,690
Native Plant Sale	48,910
Total Income	532,794

Disbursements	\$ Amount
Education and Outreach	29,030
Operations and insurance	73,114
Personnel and training	223,911
Grant expenditures	100,462
Native Plant Sale	28,120
Capital outlay	8,821
Total Expenses	463,458
Ending balance 06/30/08	235,408

E&O FUNDING: In December 2007, we completed a multi-year education grant from **Oregon Watershed Enhancement Board**. It funded supplies and materials for Benton County educators, three Making Ripples Newsletter issues, and enabled BSWCD to sponsor educator workshops and the Naturescaping Course. With this funding the E&O staff established relationships with many Benton County educators, a web of connections that is expanding!

Heath received a \$5,000 grant from **Project Learning Tree Greenworks!** to support the Dixon Creek restoration project near 9th Street in Corvallis. During the first year of this two-year grant, students studied the soil, water, plants, vegetation and fish & wildlife present at the site. Project highlights include the building of steps down to the water to minimize erosion, placement of a fish trap, adding the site as a Willamette Riverkeeper water testing location, building and placement of a birdhouse, and map creation using the GIS technology available at OSU Geosciences department.

A grant for \$750 was received from the Oregon Department of Fish and Wildlife Salmon and Trout Enhancement Program to purchase water testing equipment for the Dixon Creek project.

NATIVE PLANT SALE: Thanks once again to the dedication and leadership of coordinator, **Alice Fairfield**, the BSWCD Native Plant Sale successfully promoted the use of native plants in Benton County and beyond. With the help of 61 volunteers we filled 295 orders, which included a large order for a wetland restoration project, and distributed 36,863 plants. The sale proceeds provided five \$1,000 scholarships for Benton County citizens pursuing degrees in Natural Resources and supported our \$12,000 Conservation Education Grant fund in 2008. See page 8 for 2009 Native Plant Sale information.

TECHNICAL RESOURCE FUNDING: Donna secured funding for projects through these various sources:

Oregon Watershed Enhancement Board funded:

- irrigation efficiency improvement
- large woody debris placement
- dam removal
- removal of two culverts and one retrofit with stream restoration
- manure compost facility and sacrifice area
- Fish Passage Barrier Action Plan

Oregon Trout funded an engineered log jam and large woody debris placement

Secure Rural Schools and Community Self-determination Act of 2000, a federal program (Title II) funded the Benton Fish Passage Improvement Program

DEQ 319 grant funded:

- irrigation efficiency improvement
- Compost facility

Benton SWCD Conservation Incentive Program

- Engineering design for dam removal and stream channel restoration
- Compost facility design

Oregon Department of Agriculture funded the Benton SWCD No-spray Roadside Vegetation Management program

Additional partners on these projects included:

Marys River and Luckiamute Watershed Councils, Benton County Public Works and GIS Departments, US Environmental Protection Agency and the Natural Resources Conservation Service.

LOOKING FORWARD: We will promote agricultural projects that improve water quality with DEQ 319 grant funds and support conservation projects with BSWCD Conservation Incentive Program funds. In FY09 the GreenWorks! grant has funded a Project Learning Tree workshop for teachers and a proposed bioswale on Dixon Creek.



Horizons Fall 2008

NONPROFIT ORG
U.S. POSTAGE
PAID
CORVALLIS, OR
PERMIT NO 112

305 SW C Avenue, Suite 1
Corvallis, OR 97333
Phone: (541) 753-7208
E-mail: office@bentonswcd.org
Web: www.bentonswcd.org

*Help us save paper & fuel and reduce postage.
Subscribe to the following BSWCD email lists*
Horizons newsletter only
Announcements & Horizons
Job announcements

visit http://www.bentonswcd.org/mailing_lists
to subscribe today. It's FREE!

Please recycle this newsletter!
Better yet, pass it to a friend!



2009 Native Plant Sale is underway! Place your order now!

The order form and details are available at
<http://www.bentonswcd.org/projects/treesale>
phone 541-753-7208
email treesale@bentonswcd.org

Order deadline is January 23, 2009
Some plants have limited availability and will be
sold on a first-order first-filled basis
Plant pick-up date is Saturday, February 7, 2009

Ten reasons to plant native plants:

1. Reduce soil erosion
2. Improve water quality
3. Conserve water
4. Enhance wildlife habitat
5. Attract pollinators
6. Restore riparian areas
7. Replace invasive weeds
8. Create a wind-break
9. Lower landscape maintenance
10. Support local conservation efforts

THE BENTON SWCD MISSION *is to provide leadership to Benton County residents through education and technical assistance for conservation and responsible use and management of soil, water and related resources.*

BOARD OF DIRECTORS

DIRECTORS (ZONE)

Cliff Hall, Treasurer (1)
Anne Rigor (2)
Tom Bedell, Chair (3)
Joe Hinds (4)
Frank Nusbaum (5)
Tim Dehne, Vice Chair (At Large)
Nick Chambers (At Large)

ASSOCIATE DIRECTORS

Rana Foster
Mark Taratoot

EMPLOYEES

Jennifer Floro, Office Manager
Jennifer Ayotte, District Manager
Sarah Dyrdaahl, Conservation Technician
Donna Schmitz, Resource Conservationist
Taber Burton, Fish Passage Program Coordinator
Heath Keirstead, Education and Outreach Coordinator
Alice Fairfield, Native Tree and Shrub Sale Coordinator
Teresa Matteson, Education and Outreach Director & Horizons Editor

The Benton SWCD is an equal opportunity employer, providing services to the public without regard to race, color, national origin, gender, religion, age, disability, political beliefs, sexual orientation, and marital or family status.